

Installation instructions



Security and information	3	SC3: Pairing Schellenberg wireless tubular motor	45
Intended use	4	SC4: Pairing Schellenberg wireless reception switch	47
Improper use	4	SC5: Pairing Schellenberg wireless reception module	51
EU declaration of conformity	5	SC6: Pairing Schellenberg wireless roller shutter drives	53
Technical data	5	SC7: Pairing Schellenberg wireless awning drive Plus	55
System requirements/connections	6	SC8: Pairing Schellenberg wireless awning drives/ wireless awning motors	57
Connections on the Smart Friends Box	6	SC9: Pairing Schellenberg garage door drive Smart Drive Premium	59
Scope of delivery	6	SC10: Pairing Schellenberg wireless socket	61
1: Start-up	7	SC11: Pairing Schellenberg wireless light switch	63
2: Initial setup	8	SC12: Pairing Schellenberg wireless light module	65
3: Setting up rooms	11	SC13: Pairing Schellenberg wireless alarm handle	67
4: Pairing devices	13	SC14: Pairing Schellenberg wireless thermostat	69
5: Setting up scenes	14	P1: Connection from Paulmann product to Smart Friends Box	72
6: Setting up the home status	18	P2: Change the device settings of Paulmann products	74
7: Menu	19	P3: User operation and further installation information about Paulmann products in the "Rooms" view	76
Icons in Menu	20	P4: Further installation information about Paulmann products	79
Icons in Settings	20	P5: Paulmann products in the "Scenarios" view	82
Icons in System	20	P6: Paulmann products in the "Home status" view	85
8: Buying the Remote Home function	21	ST1: Connecting STEINEL products to Smart Friends Box	80
9: Alexa Integration	22	ST2: STEINEL products in the "Rooms" view	82
10: Connecting the ABUS Smartvest Alarm Panel to the Smart Friends Box	28	ST3: STEINEL products in the "Scenes" view	83
A1: ABUS products in the "Rooms" view	32	ST4: STEINEL products in the "Home status" view	84
A2: ABUS products in the "Scenes" view	38	ST5: STEINEL products in the "Removal process" view	85
A3: ABUS products in the "Home status" view	41		
SC1: Pairing Schellenberg products	42		
SC2: Pairing Schellenberg wireless roller shutter belt drive Premium	43		

Security and information

Dear Customer,



Please read these instructions in full prior to installation and commissioning. Pay attention to all safety information before starting work. Retain these instructions and alert all users to potential hazards associated with this product. If the owner of the product changes, always pass these instructions on to the new owner. Damage caused by misuse or incorrect installation renders the warranty and any warranty claims null and void.

- It is dangerous to use defective products. It may result in personal injury and damage to property. Short circuits and electric shocks are possible. You must stop using the defective product immediately.

- Misuse of the product increases the risk of short circuits and electric shocks.

- Only connect the product to correctly installed earthed wall sockets that are in working order and supply the grid voltage specified on the type plate.

- Use the product at an easily accessible socket.

- Do not install the product during stormy weather. The product can be destroyed by overvoltage.

- Disconnect the product from the mains network before cleaning. Only clean it with a damp cloth.

- For all components only suitable for indoor use, please ensure that

- no direct heat sources (e.g. radiators) have an effect on the components
- the components are not exposed to direct sunlight or strong artificial light
- no naked flames (e.g. lit candles) are placed on or next to the components
- contact with sprayed or dripping water is avoided

- the components are not operated in the vicinity of water and, in particular, never submerged (do not place objects containing fluids, e.g. vases or drinks on or near the device)
- the components are not exposed to large temperature fluctuations, as otherwise there may be condensation from humidity which may lead to electrical short circuits.

- Do not open or modify the product. The product must only be inspected and repaired by the customer service and installation service of the partner company in question.

- Carry out a visual check of all the components included in the scope of delivery to ensure they are in perfect condition.

- Only use original accessories. If unsuitable parts are used, this could cause damage to the product or further hazards.

- The product and the packaging material are not toys. Keep them away from children. There is a risk of injury and suffocation.

- The Smart Friends Box may only be used with the original power supply unit delivered.

Intended use

- The product is designed for the connection and control of smart home products from the following companies: ABUS, Paulmann, Schellenberg and Steinel. These are labelled as being 'Ready for Smart Friends'.
- Only use the product in dry environments (protection class IP20).
- Only use the product to control third-party devices where radio-frequency interference in the transmitter or receiver does not pose a risk to people or property.
- Using wireless systems in the vicinity of devices with magnetic radiation or metallic surface can prevent them running smoothly.
- Structural features can affect the wireless system's range and function.
- The wireless system must not be operated in areas where there is a high risk of disruption to third parties (e.g. hospitals, doctors' surgeries, health centres, airports or similar establishments).
- There is no protection against interference from other wireless systems that have been set up and operated correctly, in particular interference from compliant systems operating in the same frequency range.
- Never use the product in conjunction with devices or systems that are subject to increased safety requirements or present an increased accident risk. Please observe the legal regulations as these devices and systems require additional safety equipment.
- The companies ABUS August Bremicker Söhne KG, Paulmann Licht GmbH, Alfred Schellenberg GmbH and Steinel Vertrieb GmbH accept no liability for personal injury, damage to property or consequential damage arising from improper use.
- Any other use or usage beyond this scope is considered to be improper use.

Improper use

The following are classed as improper use and are excluded from the warranty:

- incorrect installation of the product
- failure to observe the operating and installation instructions
- improper operation, use or loading
- external influences that lead to damage to the product (e.g. shocks, bumps)
- repairs and modifications by third parties
- use of unsuitable accessories
- modifications to the device and accessories
- the device and the underside of the device may become warm and may damage heat-sensitive surfaces as a result
- damage caused by overvoltage, e.g. lightning strike
- malfunctions caused by overlapping of the radio frequency and other radio frequency interference.

EU declaration of conformity

ABUS August Bremicker Söhne KG hereby declares that this type of wireless system, Smart Friends Box, complies with Directive 2014/53/EU. The full EU Declaration of Conformity text can be found at: <http://www.abus.com>

Paulmann Licht GmbH hereby declares that this type of wireless system, Smart Friends Box, complies with Directive 2014/53/EU. The full EU Declaration of Conformity text can be found at:
www.paulmann.com/de/de/b2b-haendler-log-in.html

Alfred Schellenberg GmbH hereby declares that this type of wireless system, Smart Friends Box, complies with Directive 2014/53/EU. The full EU Declaration of Conformity text can be found at:

http://www.schellenberg.de/fileadmin/user_upload/SFB_EU_Konformitaetserklaerung.pdf

Steinel Vertrieb GmbH hereby declares that this type of wireless system, Smart Friends Box, complies with Directive 2014/53/EU. The full EU Declaration of Conformity text can be found at:

<http://www.steinel.de>



Do not dispose of the product with household waste. The product is recyclable and can be taken to a recycling centre or a collection point for electrical household waste. Electrical appliances, accessories and packaging should be sent for environmentally friendly recycling.



Structural features can affect the Smart Friends Box's range and function.

Batteries: Do not throw batteries in household waste, on fires or into water.

Batteries should be collected, recycled or disposed of in an environmentally friendly manner.

Technical data	Smart Friends Box
Power supply	5 V DC/2 A
Power supply unit	230 V/50 Hz
Protection class	IP 20
Ambient temperature	0–50° Celsius
LAN	Ethernet 100Mbit; RJ-45
USB	USB 2.0
Power consumption	≤ 2.0 watts

Technical data	ABUS	Paulmann	Schellenberg	STEINEL
Wireless protocol	Smartvest	ZigBee	Schellenberg Radio System	Z-Wave
Radio frequency	868.3 MHz	2.4 GHz	868.4 MHz	868 MHz
Range in building	max. 30 m	approx. 30 m	max. 20 m	approx. 40 m
Range outdoors	max. 100 m	approx. 50 m	max. 150 m	approx. 100 m
Energy emitted	approx. +7.6 dBm / 5.75 mW	0 dBm / 1 mW	approx. -8 dBm / 0.16 mW	+4 dBm



Disclaimer: This user manual has been produced with the greatest of care. Should you discover any omissions or inaccuracies however, please inform us in writing at the addresses provided on the back. ABUS, Paulmann, Schellenberg and Steinel do not accept any liability for technical and typographical errors, and reserve the right to make changes to the product and user manuals at any time and without prior warning.

ABUS, Paulmann, Schellenberg and Steinel are not liable or responsible for direct or indirect damage resulting from the equipment, performance and use of this product. No guarantee is made for the contents of this document.

System requirements/connections

The following system requirements and connections must be available and enabled in advance in order to use the Smart Friends system:

Router

- DHCP server with a free LAN connection (RJ-45 socket). Another free LAN connection must be available to connect the ABUS Smartvest wireless alarm system.
- Wi-Fi (home network) enabled for local control
- Internet enabled for the Remote Home function*

Smartphone/tablet

- Apple iOS device, iOS8 or higher
- Android device, Version 4.4 or higher
- Connection with home network (Wi-Fi see "Router") enabled
- Mobile internet enabled for the Remote Home function*
- Smart Friends app installed

***Note:** To be able to control your Smart Friends system outside your local Wi-Fi network, you need the Remote Home function. You can find information about how to buy this on page 21.

For the Remote Home function, the internet connection to your router and to your smartphone and tablet must be enabled. When using the internet, you may incur additional costs from your internet provider/service provider.

Connections on the Smart Home Box



- ① Power supply socket for connecting the power supply unit

- ② RJ-45 socket for connection to a suitable router via LAN cable

- ③ Reset button
Press and hold for one second: a) Box restarts
b) Reset password: To reset the password, the user must log in with the following user data:
User: Admin
Password: Admin

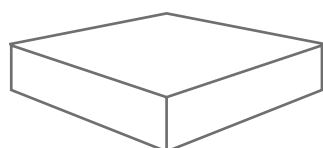
- ④ USB socket

within 10 minutes of pressing the reset button. After that, the user is asked to set a new password. For security reasons, the function is not available via the "Outdoor Control" function. The user must be physically in front of the box to press the reset button, and must be on their home Wi-Fi. After changing the password, it is only possible to log in again with the above-mentioned user data after pressing the reset button.

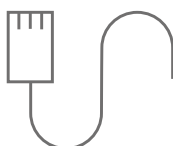
Press and hold for ten seconds: Reset the box to the factory settings

***Note:** Only use the Smart Friends Box with the original power supply unit. The power supply unit is designed solely for connection to the Smart Friends Box.

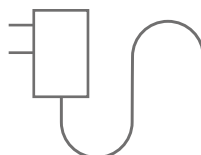
Scope of delivery



Smart Friends Box
14 x 14 cm



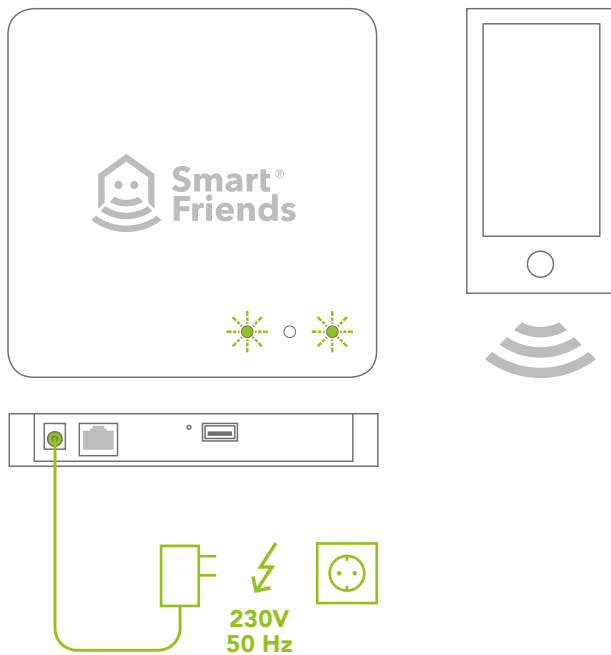
LAN cable
200 cm



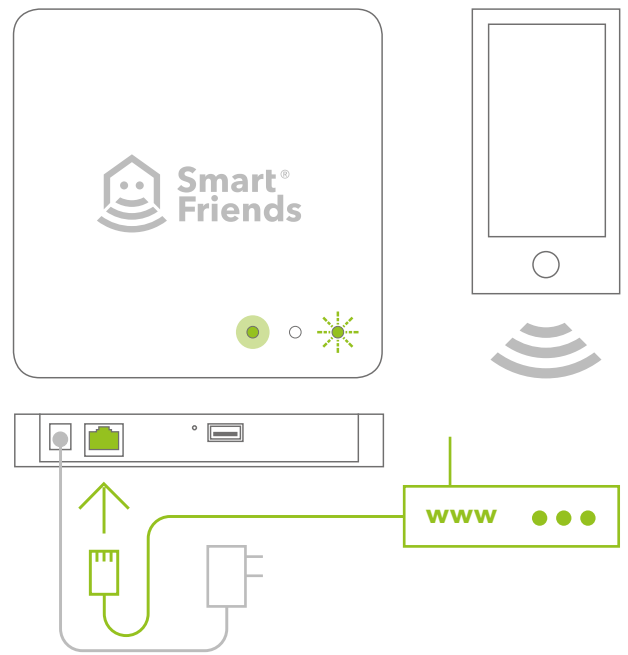
Power supply unit
AC/230V

A: Start-up

1.1



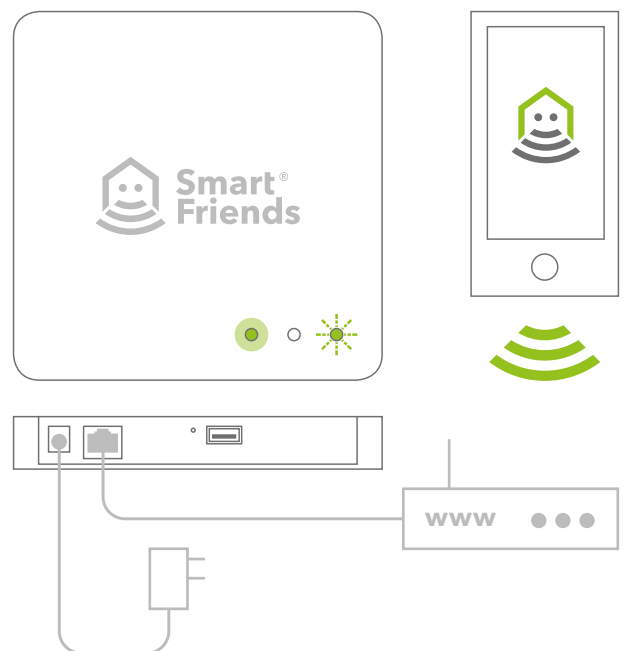
1.2



1.3



1.4



2: Initial setup

2.1

Download the "Smart Friends" app from the App Store or the Google Play Store.



<https://appsto.re/de/6lLdab.i>



https://play.google.com/store/apps/details?id=de.smart_friends.smarthome&hl=de



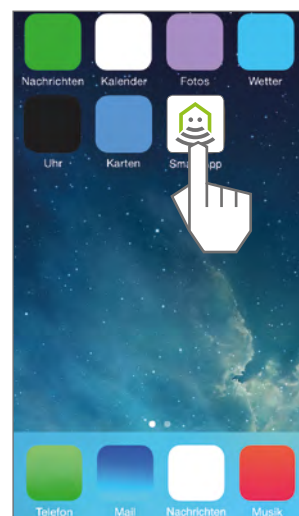
Follow the download instructions.

2.2

Install the app on your smartphone or tablet.



Install the app according to the user guide for your smartphone or tablet.



2.3



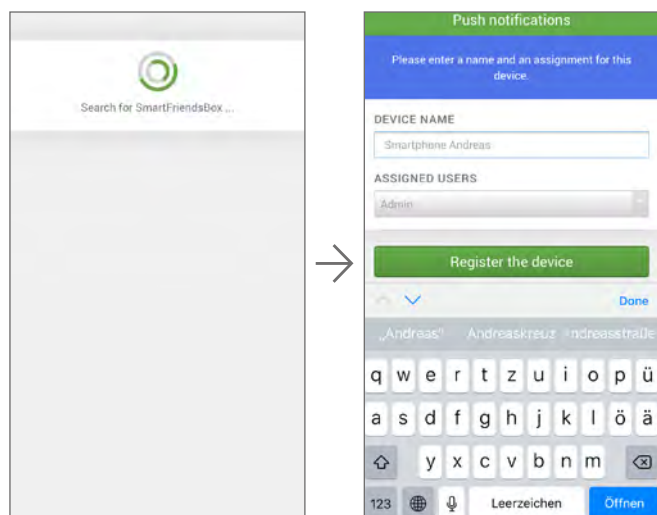
Start initial set-up

Demo mode: Brief overview of the functions of the Smart Friends app without pairing with the Smart Friends Box.

Exit the demo mode via Menu/Logout.

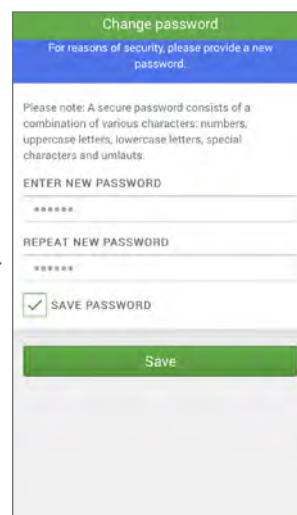
2.4

Give your smartphone or tablet a name here to be able to use the "Push notifications" function. In the scenes, you can choose which device you want to receive push notifications.



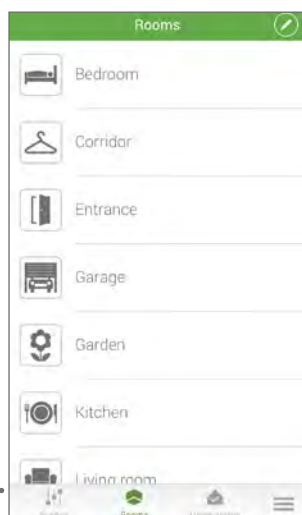
2.5

As soon as the Smart Friends Box has been found, save your personal password. Make a note of your password here:



If the option "Save password" is enabled, this makes the login process much simpler next time you launch the app.

2.6



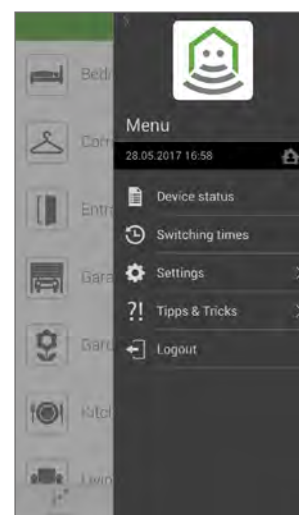
Scenes (p. 14)

Rooms (p. 11)

Menu (p. 19)

Home status (p. 18)

2.7



Installation instructions



Control mode enabled, by pressing Switch to control mode.



Programming mode enabled, by pressing Switch to programming mode.



Choose icon for devices, rooms and scenes.



Change settings of devices, rooms and scenes.



Delete devices, rooms and scenes.



Set up the home status of a device.



Add devices, rooms and scenes.



Scroll up button



Stop button



Scroll down button



On button



Off button



Devices: A scene can be performed by triggering a device.



Timer: A scene can be triggered by a defined timer setting.



Astro function: A scene can be triggered depending on the path of the sun.

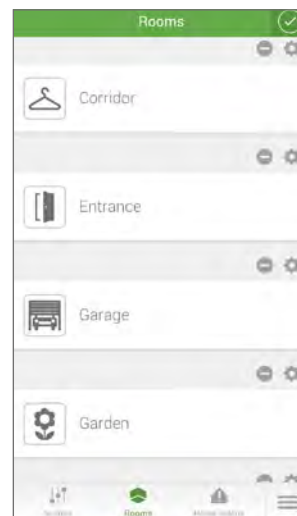
3: Setting up rooms

3.1



Rooms are already created to make it easier to start configuring the app. The settings for the rooms can be changed at any time.

3.2

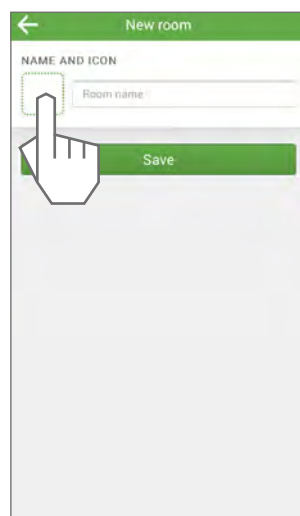


Scroll down screen

3.3



3.4



3.5

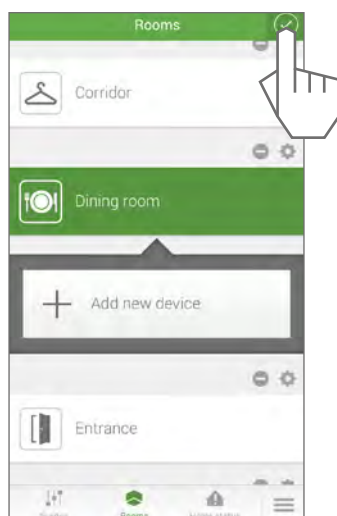


3.6

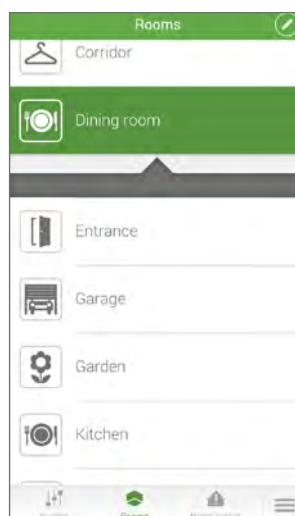
Name room



3.7

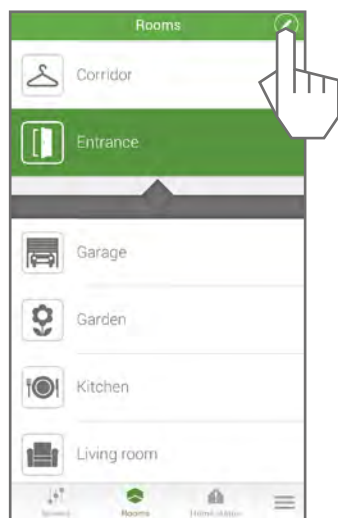


3.8

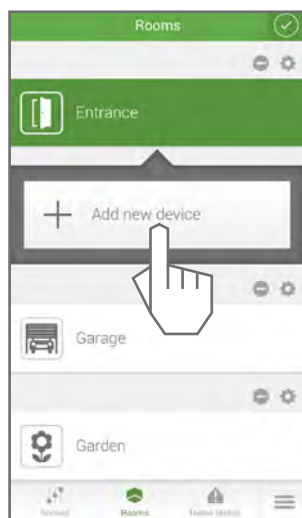


4: Pairing devices

4.1



4.2



Please refer to the chapters from the four manufacturers, ABUS, Paulmann, Schellenberg and STEINEL.

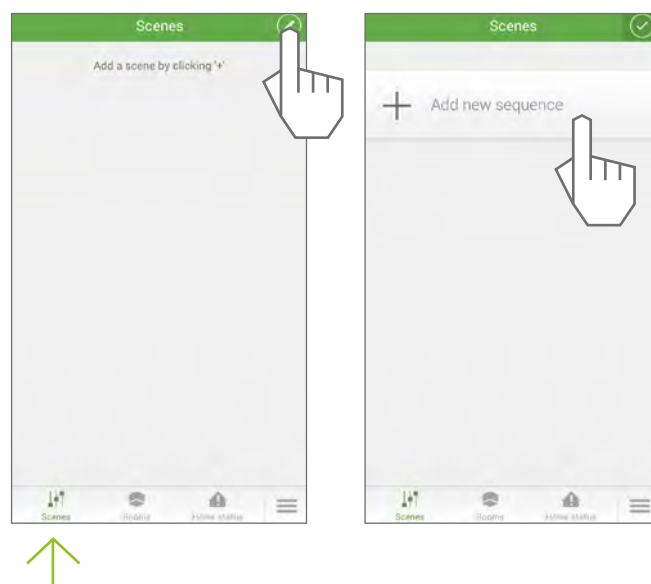
5: Setting up scenes

5.1

Paired devices in the rooms can be networked above the level of rooms and controlled at the same time within a scene. A status is defined for each device (e.g. roller shutter up, light on), which is then performed after triggering the scene. A scene can be triggered manually or automatically.



Tip: Before creating scenes, it is recommended that you draw up a guide specifying the system to be followed when classifying scenes.



5.2

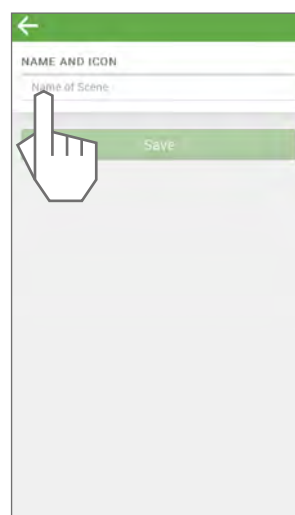
Standard scene



Standard scenes: enable the automated or manual operation of all devices on the basis of individually specified conditions.

On/Off scenes: enable the automated or manual operation of On/Off devices on the basis of individually specified conditions.

Roller shutter scenes: enable the automated or manual operation of roller shutters on the basis of individually specified conditions.



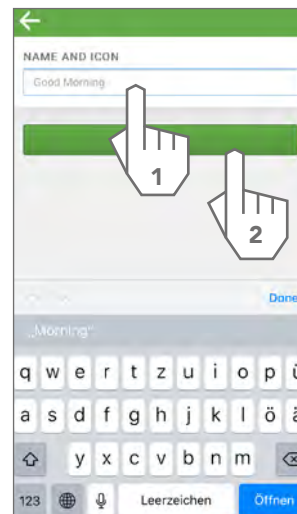
5.3

Name scenes



5.4

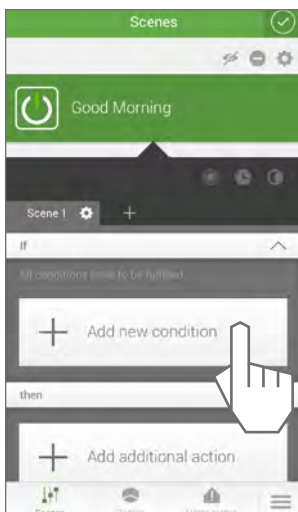
Name scenes



5.5

Create a manual scene: Begin at step **E10**

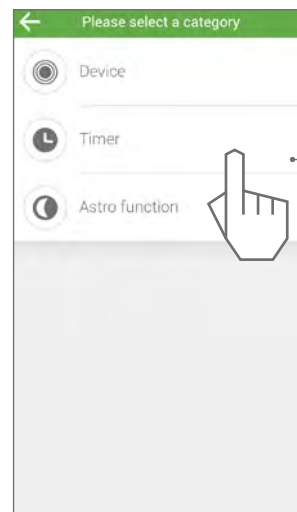
Create an automated scene: Begin at step **E5**



5.6

Select the desired type of automation.

For a guide to the icons, see page 10.



Example:
Timer

5.7

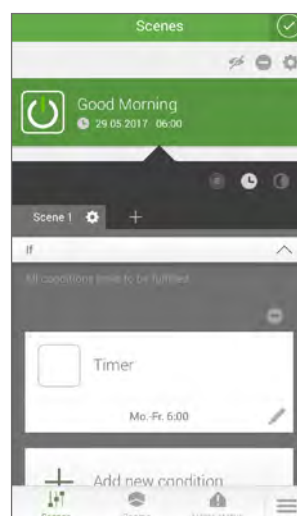
Adjust personal settings



Scroll down screen

5.8

Icons for the specified automation



white: enabled

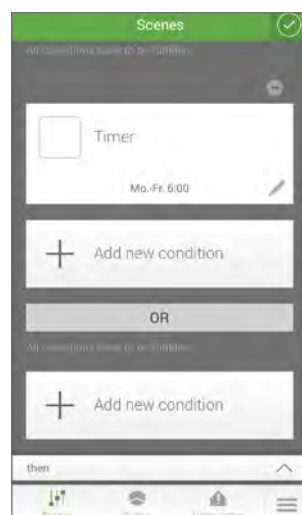
grey: disabled, scene can only be triggered manually



Scroll down screen

5.9

Other types of automation can be specified.



And-link:
All the conditions must be met.

Or-link:
One of the conditions set must be met.

5.10

Other types of automation can be specified.



Select the devices that are to be added to the scene.

Select a different scene you have already created as a follow-up scene.

5.11

Select and save the devices in the rooms that are to be added.



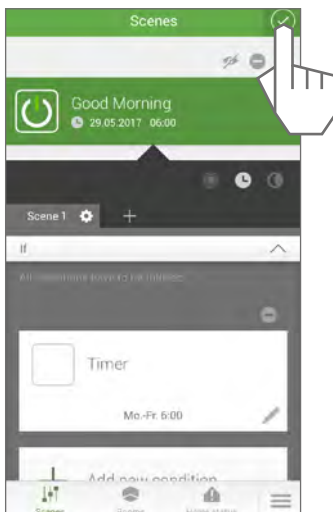
5.12

Specify the device status that should be achieved after triggering the scene.



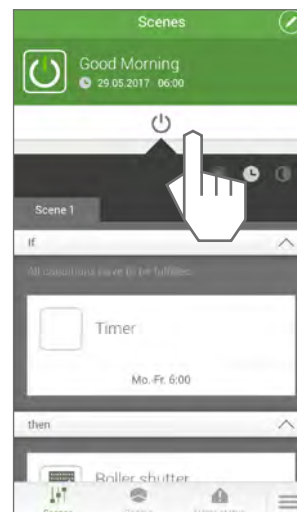
5.13

Save the scene created.



5.14

A scene can be triggered manually at any time.

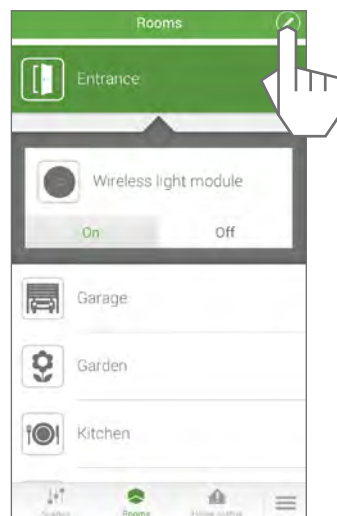


Activated automation is displayed.

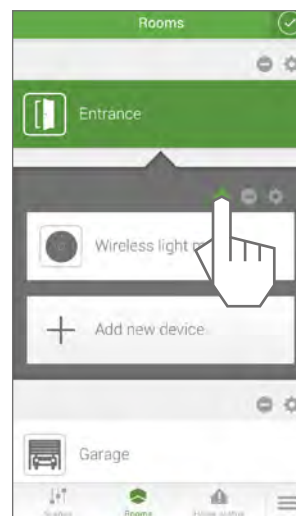
6: Setting up the home status

The home status provides an overview of all the devices that have a pre-defined critical status. A different critical status can be set for each individual device.

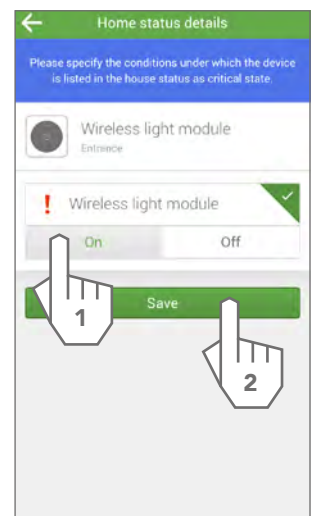
6.1



6.2



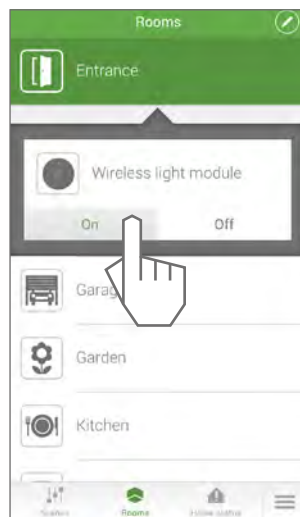
6.3



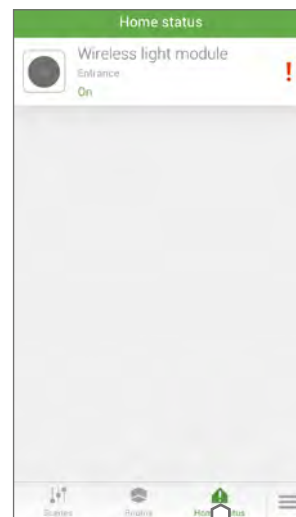
6.4



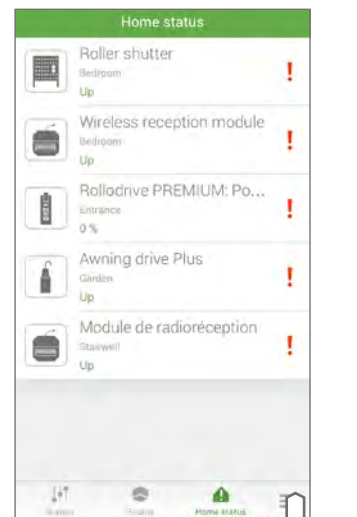
6.5



6.6



6.7



7: Menu

7.1



7.2



7.3



7.1

Icons in Menu



Network status: Local connection via Wi-Fi.



Network status: External Connection via the Remote Home function.



Device status: Logs the last command performed by each device.



Switching times: Chronological list of the switching times set (timer and astro function).



Settings: Opens the "Settings" tab in the menu.



Tips & tricks: Useful information about configuring and using the Smart Friends system.



Log out: Close the app.

7.2

Icons in Settings



User: Account management



Extensions: Overview and purchase of add-on functions (e.g. purchase of the Remote Home function).



System: Opens the "System" tab in the menu.



GTC



Masthead

7.3

Icons in System



Information: Details of the Smart Friends app and the Smart Home Alarm Panel.



Licences



Reset system: Delete app data and restore factory settings.



System backup: Data backup to commercially available USB stick.

8: Buying the Remote Home function

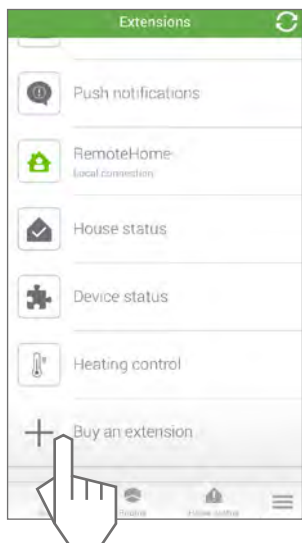
With the Remote Home function you can control your devices even from outside your home Wi-Fi. You can then access them from anywhere via your mobile internet on your smartphone or tablet.

After a six-month free trial, you can buy a licence for €9.99/12 months. There is no subscription and no automatic contract renewal.

8.1

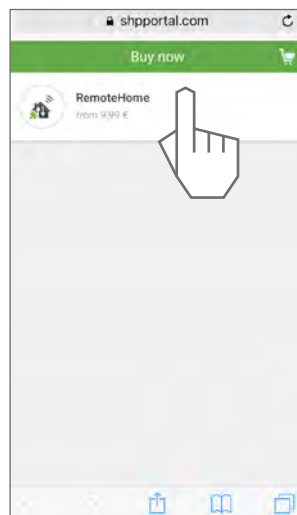


8.2



8.3

Follow the shop's menu guidance. Once the purchase has been completed, the function is automatically enabled.

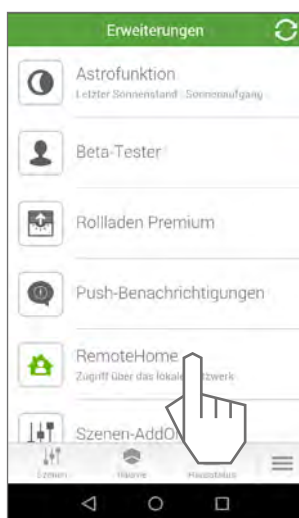


For security reasons, each user must connect to the Smart Friends Box from within their home Wi-Fi at least once before they can use the Remote Home function.

9: Alexa Integration

9.1

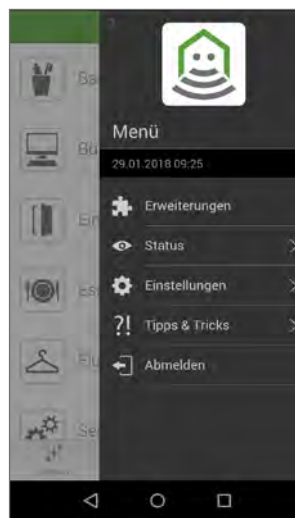
RemoteHome modul is required for Voice Assistance



Please activate under
Settings > Extensions >
RemoteHome module.
It will be free for 6 months.

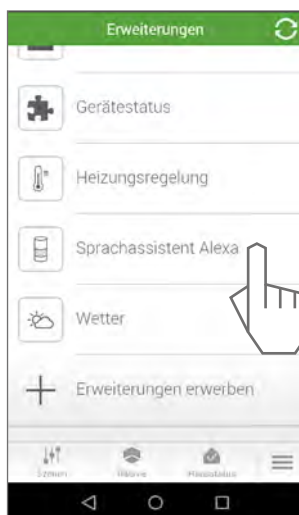
9.2

Please activate the Alexa voice assistance under Settings > Extensions > Voice Assistance module. Please follow the instructions given in the app.



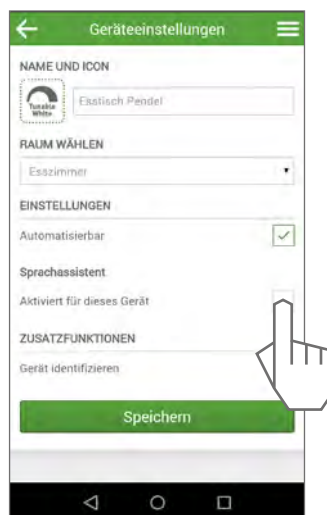
9.3

The Alexa voice assistant shall be activated now.



9.4

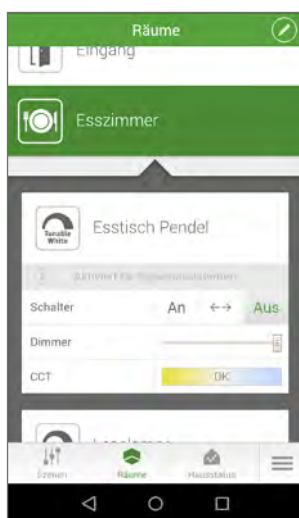
Activate Devices for Voice Assistance. Please complete your configuration within the Smart Friends app. Finalize all item and scene settings.



Each device or scene that shall be available to Alexa voice assistance shall be separately activated by choosing a hook under **Voice Assistance** in device or scene settings.

9.5

If Voice Assistance is successfully activated, you will find a grey bar in the device preview.



You can now synchronize the configuration of the Smart Friends App with your Alexa Echo.

9.6

Activate Scenes for Voice Assistance.



Please change to scenes menu and choose the scene you likely to activate for voice assistance. Hook-up Voice Assistance and save your settings.

9.7

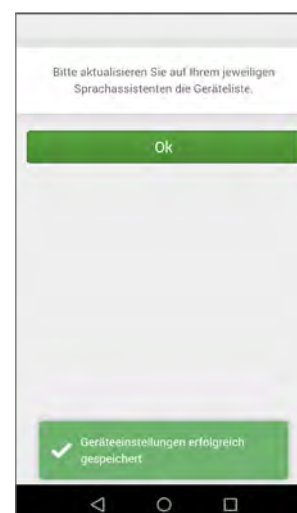
Scenes available for Voice Assistance will be indicated by a grey bar.



Please note:

- Avoid scene names with similar wording or pronunciation to prevent confusion of voice commands.
- Note the difference between scene control (inside Smart Friends) and group control (inside Alexa). Scenes usually only support an "On" command, even so settings will switch off the included devices.
- For scenes voice commands like "dim to 50%" or "set colour to red" not be supported. Dimming and colours shall be pre-set in the scene and then activated with an "On" command.

9.8



Please note: any changes within the Smart Friends App (scene settings, device settings) will be available for Alexa but only after new synchronization (e.g. „Alexa, search for new devices“).

9.9

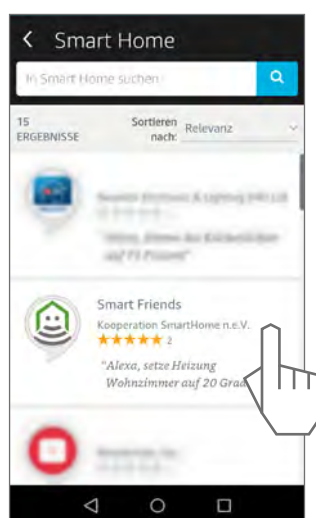


Please note: all Echo devices may be used for voice control via Smart Friends Box.

Connect your Echo to the net-adaptor and start installation. Follow the Amazon Alexa App instructions.

9.10

Please activate the Smart Friends Skill. Change to **Skills** within the Amazon Alexa App. Search for **Smart Friends**.



9.11

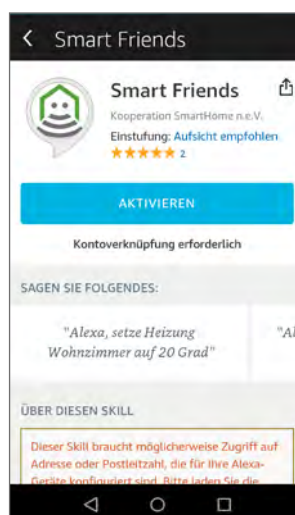
To active the Smart Friends skill change back to the Smart Friends App and pick under Settings > Extensions > **Voice Assistance** the given Token-Code.



Please click the copy icon.

9.12

Please change back to the Amazon Alexa App and hit **activate** under the Smart Friends skill.



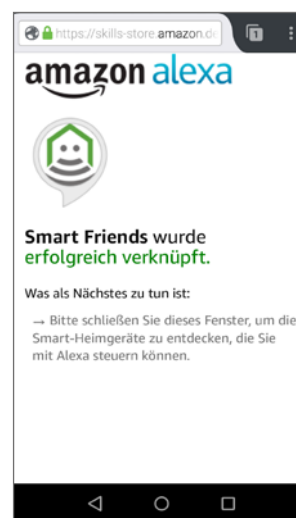
9.13

Please insert the copied Token number of the Voice assistance module.



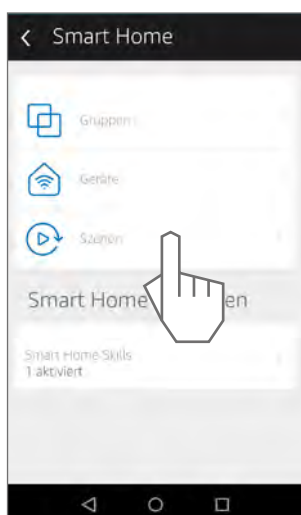
9.14

You shall now have successfully activated your Smart Friends skill.



9.15

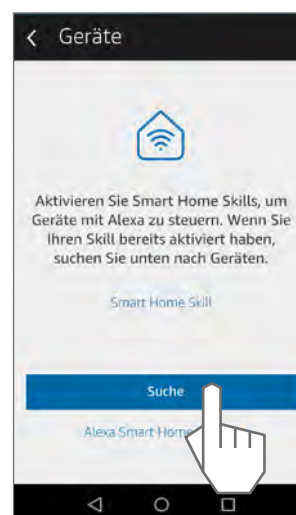
Synchronized devices and scenes with Amazon Alexa



Change back to amazon Alexa App and start synchronization by hitting under Smart Home > Devices > Search new Devices.

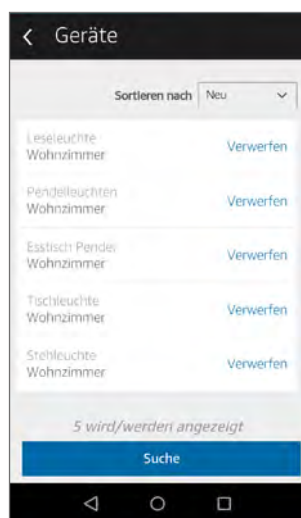
9.16

Else you can say: "Alexa, search my new devices".



9.17

Searching will take 20-40 seconds. Devices will be synchronized with their names and room assignments.



In case you will delete your device information within the Amazon Alexa App, the devices will still stay within the Smart Friends App configuration.

9.18

Within Amazon Alexa App it is possible to make further group settings.



Follow the app instructions under Smart Home >

Groups and create new groups to assign the preferred devices to it.

9.19

Choose **New Group**



9.20

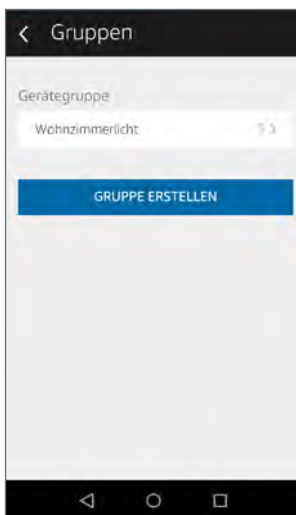
Hook-up the preferred devices for each group.



Please note: in case not all items of one group will support all functionality (e.g. only dimming, not colour change), the voice command just will be ignored by these devices and executed by the others.

9.21

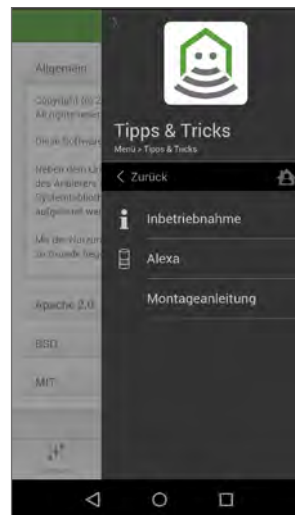
The group you have set up acts like a single device, e.g. a whole group can be dimmed alternately to varying degrees or the colour can be changed across the group.



Note: In comparison to groups, scenes support one individually set value per device, that can be adjusted by calling up the scene. If you try to alternately dim all the devices in a scene or change the colour, Alexa will issue an error notification ("...function is not supported").

9.22

Please find further instructions under Settings > Tips & Tricks > **Alexa**.



10: Connecting ABUS products to the Smart Friends Box

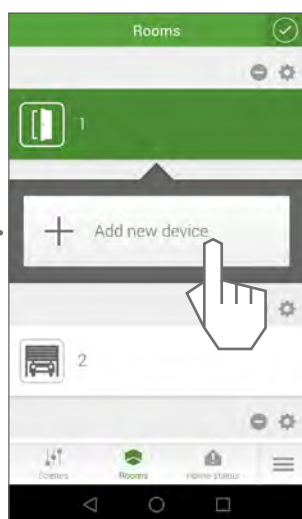
10.1

Smartvest Alarm Panel: Open the "Rooms" view.
Select the **pencil icon** to switch to the programming mode.

Then select the plus sign to add another device.



Important note: Ensure that the Smartvest and the Smart Friends Box are in the same network and that all the components of the Smartvest have been learned.

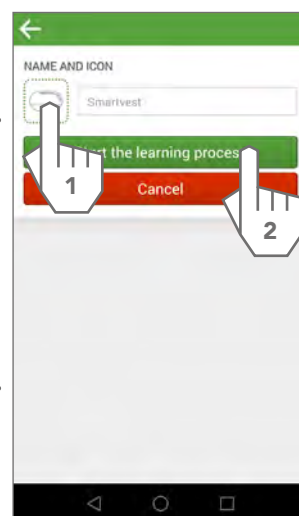


10.2

Select the **Smartvest icon**. The three fields for the name, system and description are then filled in automatically.

You can edit the name "Smartvest" if you wish.

Then select "Start the learning process".



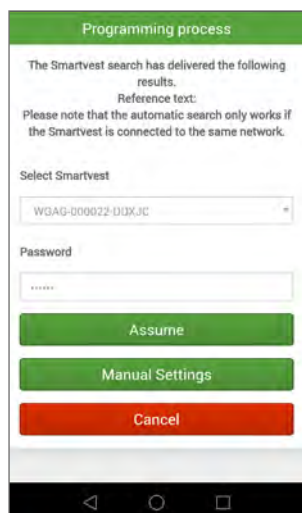
10.3

The Smart Friends Box automatically looks for a Smartvest Alarm Panel in the local network.

If a Smartvest Alarm Panel is found, this is displayed to you with the DID (WGAG-XXX-XXX).

The standard device security code for the Smartvest, "123456", is entered automatically.

Where applicable, replace this with the device security code that you have assigned to your Smartvest.



Important note: If the device security code is incorrect, the Smart Friends Box will not be able to connect to your Smartvest.



Tip: If the Smart Friends Box cannot find any Smartvest in the network, first try restarting the Smartvest and then repeat the process. If the Smart Friends Box still cannot find any Smartvest, enter the DID of your Smartvest in "Manual settings".

10.4

You now receive a message confirming that the learning process has been started. You are then shown the number of Smartvest components that can be imported. These include opening detectors, motion detectors, smoke detectors, power sockets and cameras. Select "OK" to continue.



Tip: Only the above-mentioned sensors and actuators are connected to the Smart Friends Box.

Control elements, e.g. remote controls or control panels, access the Smartvest directly and are not connected to the Smart Friends Box.

Alarm devices, e.g. sirens, are controlled by the Smartvest automatically in the event of an alarm and are not connected to the Smart Friends Box.

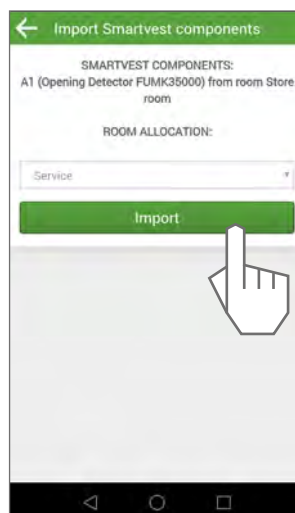


10.5

Step by step, you are shown the Smartvest components that can be imported, together with their name, type and item number. For each component, select a room where it is installed. The display in the Smart Friends app is based on the allocations made here.



Tip: If the desired room has not yet been created, select the room "Service". You can change the room allocations at any time afterwards.



Smartvest cameras: If you wish to import a camera directly because it is not connected to a Smartvest, please follow the instructions in this chapter. The learning process is identical to the Smartvest Alarm Panel.



Tip: In principle, cameras that are already connected to the Smartvest can be imported into the Smart Friends Box in the same way as all the other components.

The DID and the password for the camera are then synchronised and do not need to be re-entered.

For this, following the instructions in Chapter 2.

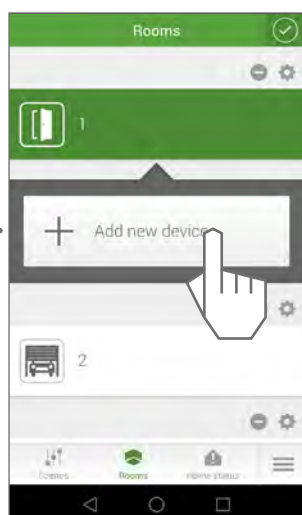
10.6

Open the "Rooms" view. Select the **pencil icon** to switch to the programming mode.

Then select the plus sign to add another device.



Important note: Ensure that the camera and the Smart Friends Box are in the same network. The camera cannot be integrated if it is in the Access Point mode as then the camera is in its own network.

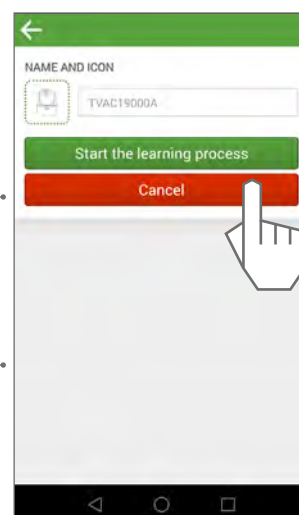


10.7

Select a **camera icon**. Choose a name for the camera.

The fields System "Smartvest" and Description "Camera" are then filled in automatically.

Then select "Start the learning process".



10.8

The Smart Friends Box automatically looks for a compatible camera in the local network.

If a compatible camera is found, this is displayed to you with the DID (CGAG-XXX-XXX). The standard device security code for the camera, "123456", is entered automatically.

Where applicable, replace this with the device security code that you have assigned to your camera.



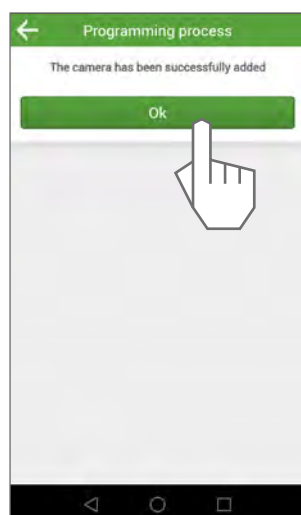
Important note: If the device security code is incorrect, the Smart Friends Box will not be able to connect to your camera.



Tip: If the Smart Friends Box cannot find any camera in the network, first try restarting the camera and then repeat the process. If the Smart Friends Box still cannot find any camera, enter the DID of your camera in "Manual settings".

10.9

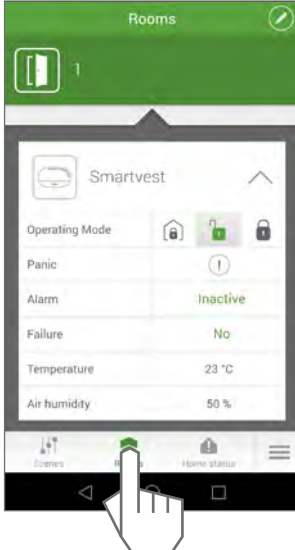
You are now shown messages confirming that a connection to the camera has been established and the camera has been successfully added.



A1: ABUS products in the "Rooms" view

A1.1

Smartvest Alarm Panel: Once all the components have been allocated to a room, the synchronisation between the ABUS product and the Smart Friends Box is complete. From now on, the Smart Friends Box receives information from the Smartvest and/or camera and displays this in your Smart Friends app. You can also operate the Smartvest and/or camera directly via the Smart Friends app.



Operating mode:
Part set, disarm or arm.

Panic: Trigger panic alarm

Alarm: inactive, active (burglar alarm), panic, tampering, 24-hour (fire or water alarm)

Failure: No connection, incorrect password

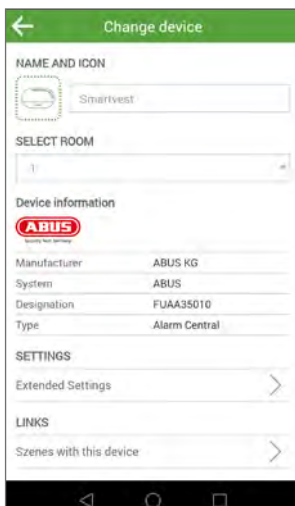
Temperature/air humidity:
Latest measurement by the Smartvest Alarm Panel

A1.2

Smartvest Alarm Panel settings: Select the **pencil icon** to switch to the programming mode. Then select the **gear icon** to switch to the alarm panel's settings.



Tip: If you have added or deleted any components in the Smartvest app, select "Synchronise components". The Smartvest then transfers the new component list to the Smart Friends Box.



Changes can be made to the icon, name and room

Extended settings:

- Show the Smartvest DID and option of changing the password for connecting to the Smartvest.
- Additional functions: Synchronise components

Links: All scenes with this product

A1.3

Smartvest Opening Detector/Motion Detector

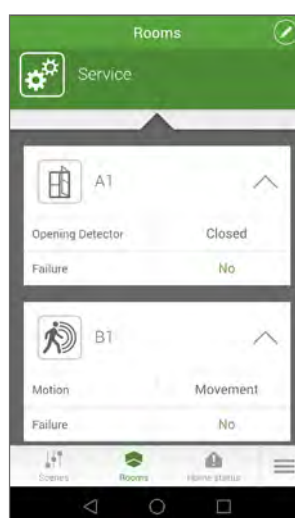


Tip (opening detector): All "Low battery" messages must be acknowledged in the Smartvest app.



Tip (motion detector): The Smartvest Motion Detector has an energy-saving mode. Once movement has been detected, the status remains on "Movement" for 120 seconds, and the earliest that a new movement can be detected and reported is after these 120 seconds have expired.

Status: Movement/
No movement



Status: Open/closed

Failure: No, Low battery,
No signal

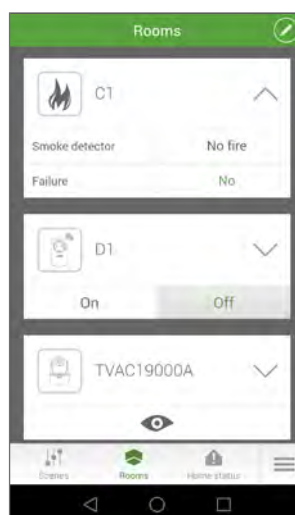
A1.4

Smartvest Smoke Detector/Socket



Tip (smoke detector): When you test the smoke detector by pressing the test button, the "Fire" status remains for 30 seconds.

If there is a real fire alarm, the "Fire" status remains in place until the smoke detector stops its alarm. This happens if there are no more smoke particles present in the measuring chamber.



Status: Fire/No fire

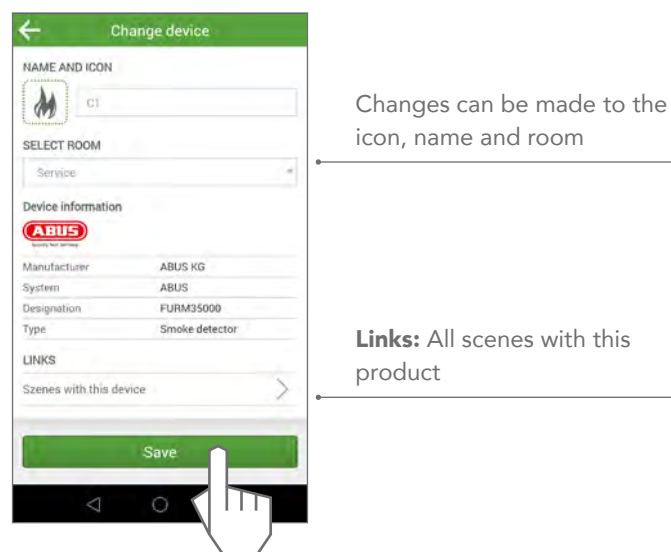
Smoke Detector:
Failure: No, Low battery,
No signal

Switch: On/Off

Socket
Failure: No, No signal

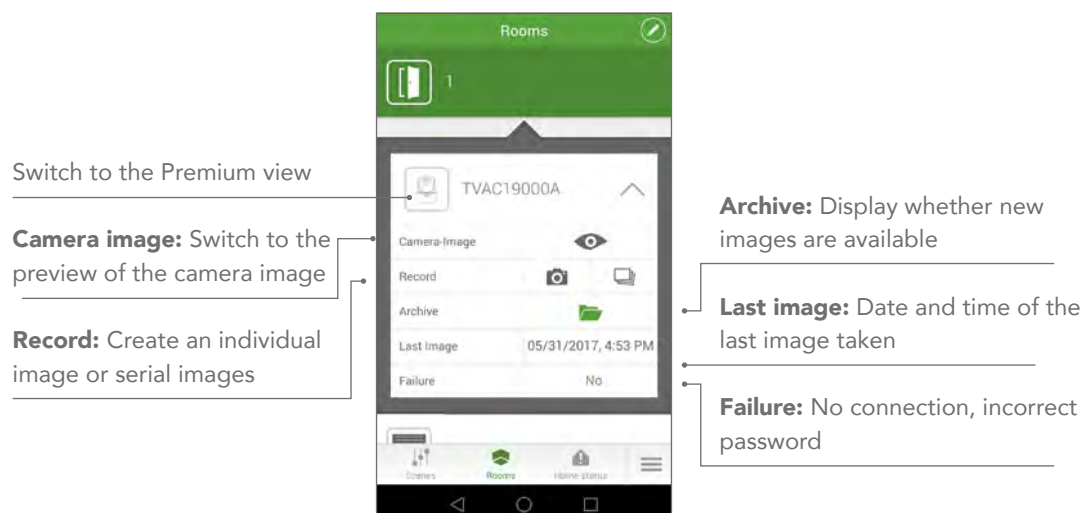
A1.5

Smartvest component settings: Select the **pencil icon** to switch to the programming mode. Then select the **gear icon** to switch to the specific component's settings.



A1.6

Camera in the Rooms view

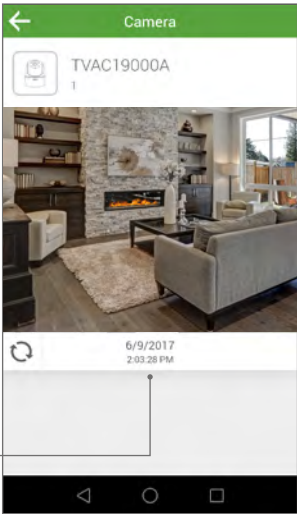


A1.7

Camera in the view: Live mode The camera image refreshes itself automatically after a specified live image refresh interval.

Refresh: A new camera image is displayed

Last image: Date and time of the last image taken



Important note: Only individual camera images are displayed and refreshed; this is not a video function with multiple fps. The way the camera functions in combination with the Smart Friends Box is different from how it functions in combination with App2Cam or the Smartvest app.

A1.8

Camera in the view: Premium view live mode



The Premium view combines all the main functions of the camera.

Capture a **serial image**

Capture an **individual image**

A1.9

Camera in the view: Premium view image archive

The archive contains all the saved images.



Forward: Switch to next image

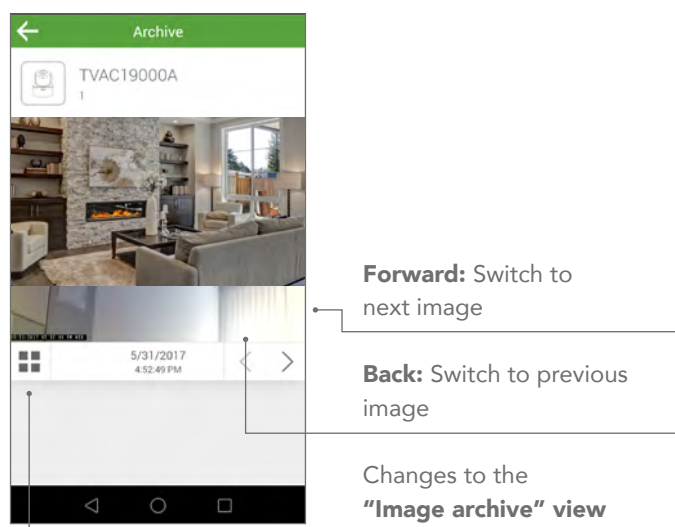
Back: Switch to previous image

Changes to the "Image archive" view

A1.10

Camera in the view: Archive

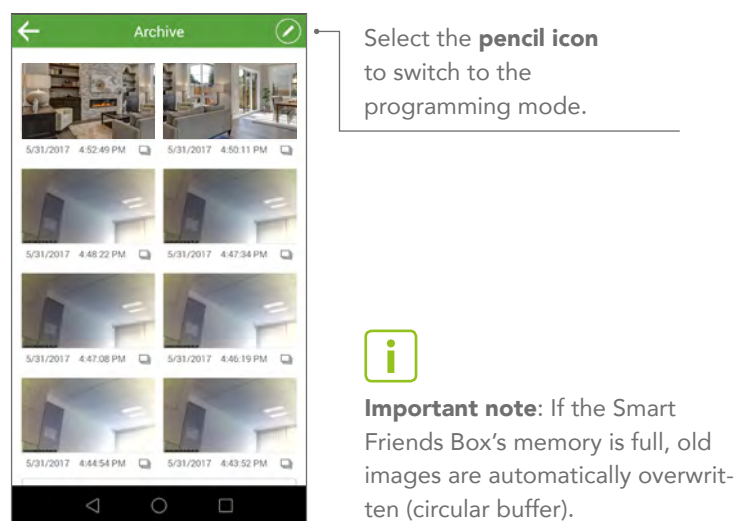
The archive contains all the saved images.



A1.11

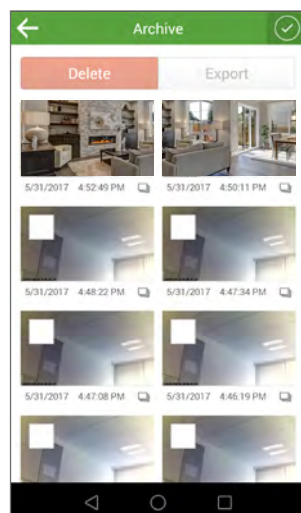
Camera in the view: Image archive

The image archive contains all the saved images. For each image, a compressed preview image appears in the view.



A1.12

In the programming mode, you can select images and then delete them using the relevant button or export them to your smartphone/tablet.



A1.13

Select the **pencil icon** to switch to the programming mode.
Then select the **gear icon** to switch to the camera's settings.



Changes can be made to the icon, name and room

A1.14

Links:



Links: All scenes with this product.

A1.15

Extended settings:

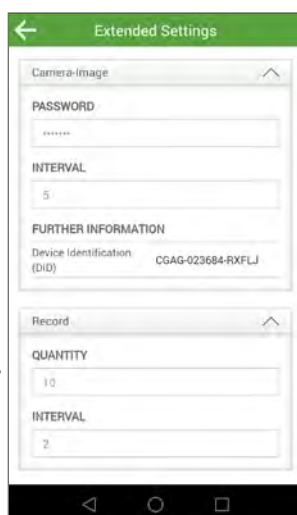
Show the camera DID and option of changing the password for connecting to the camera.

Serial image quantity: The serial image quantity defines how many serial images are to be taken each time by the action "Capture serial image".

- Default: 5 images
- Possible range 3 to 10 images

Serial image interval The serial image interval defines how long the gap between the individual serial images should be.

- Default: 5 seconds
- Possible range 2 to 10 seconds



Show the camera DID and option of changing the password for connecting to the camera.

Live image refresh interval: This interval defines how often the camera's preview image is refreshed.

- Default: 5 seconds
- Possible range 2 to 10 seconds

A2: ABUS products in the "Scenes" view

A2.1

Smartvest Alarm Panel: The following conditions can be used as a trigger in the **IF section** of the scene:



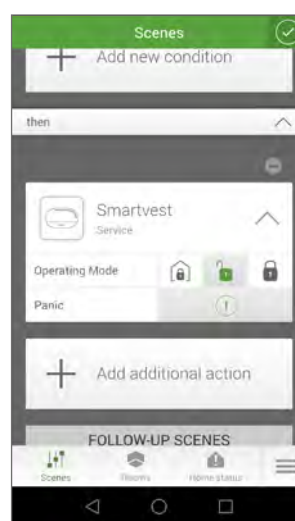
Operating mode: part set, disarm or arm

Alarm: inactive, active (burglar alarm), panic, tampering, 24-hour (fire or water alarm)

Failure: No connection, incorrect password

Temperature/air humidity: =, > or < the latest measurement by the Smartvest Alarm Panel

Smartvest Alarm Panel: The following conditions can be used as an actuator in the **THEN section** of the scene:

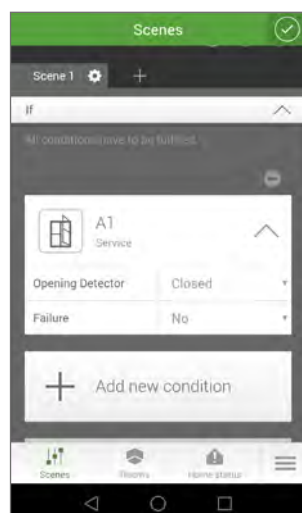


Operating mode:
Part set, disarm or arm

Panic: Trigger panic alarm

A2.2

Smartvest Opening Detector The following conditions can be used as a trigger in the **IF section** of the scene:



Opening Detector: Open, Closed

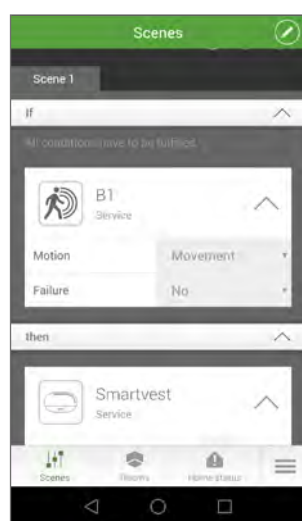
Failure: No, Low battery, No signal



Note: No conditions can be used as an actuator in the **THEN section** of the scene:

A2.3

Smartvest Motion Detector: The following conditions can be used as a trigger in the **IF** section of the scene:



Motion detector:
Movement, No movement

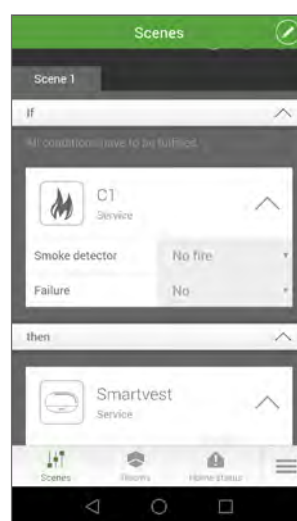
Failure: No, Low battery,
No signal



Note: No conditions can be used as an actuator in the **THEN** section of the scene:

A2.4

Smartvest Smoke Detector: The following conditions can be used as a trigger in the **IF** section of the scene:



Smoke detector:
Fire, No fire

Failure: No, Low battery,
No signal



Note: No conditions can be used as an actuator in the **THEN** section of the scene:

A2.5

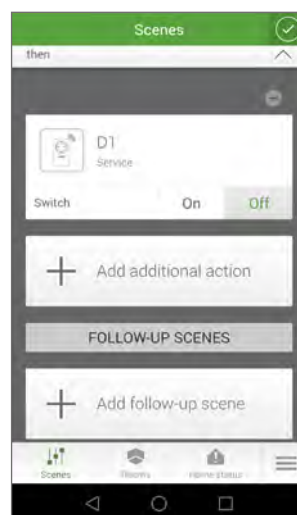
Smartvest Socket: The following conditions can be used as a trigger in the **IF** section of the scene:



Switch: On, Off

Failure: No, No signal

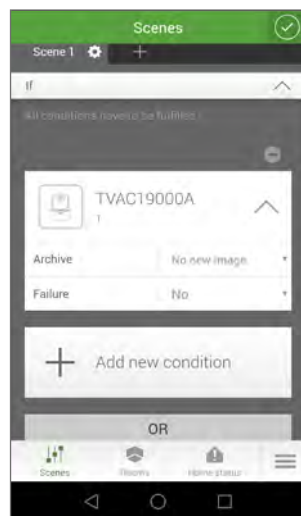
Smartvest Socket: The following conditions can be used as an actuator in the **THEN** section of the scene:



Switch: On, Off

A2.6

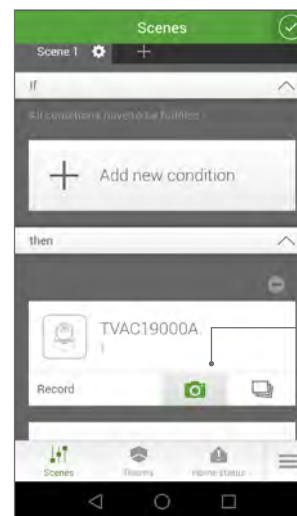
Smartvest Camera: The following conditions can be used as a trigger in the **IF section** of the scene:



Archive: No new image, new image

Failure: No connection, incorrect password

Smartvest Camera: The following conditions can be used as an actuator in the **THEN section** of the scene:



Capture an **individual image**

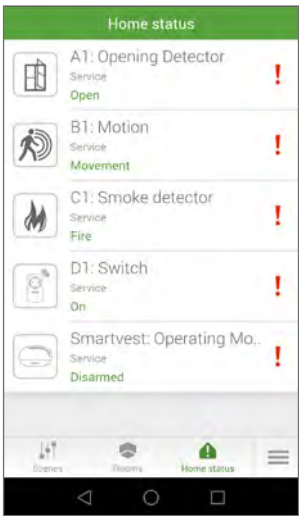
Capture a **serial image**

A3: ABUS products in the “Home status” view

A3.1

In the Home status view, you are given an overview of all the components whose current status is classed as “critical”.
If their status changes to “non-critical”, the components will no longer be included in this overview.
ABUS products are already preconfigured for you.

Product	Critical status	Non-critical status
Smartvest Alarm Panel	Disarmed/Alarm/Failure	Armed/Part set/ No alarm/No failure
Smartvest Opening Detector	Open/Failure	Closed/No failure
Smartvest Motion Detector	Movement/Failure	No movement/ No failure
Smartvest Smoke Detector	Fire/Failure	No fire/No failure
Smartvest Socket	On/Failure	Off/No failure
Camera	New images	No new images



A3.2

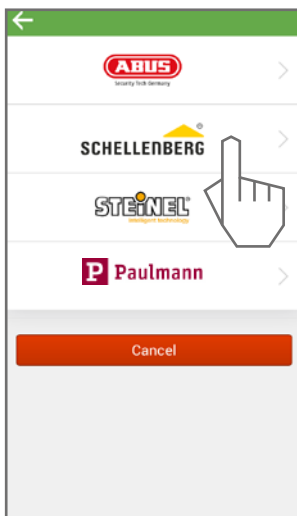
Should you wish to alter the preconfigured settings for the home status, switch to the Rooms view for the component in question.



- Select the **pencil icon** to switch to the programming mode.
- Then select the home status icon to switch to the specific component's settings.

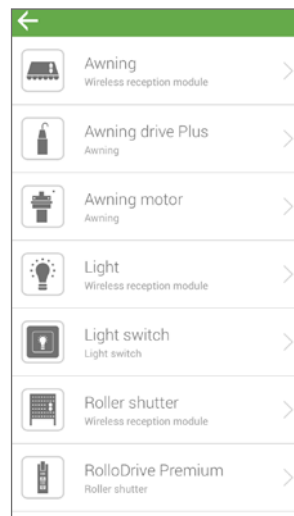
SC1: Pairing Schellenberg products

SC1.1

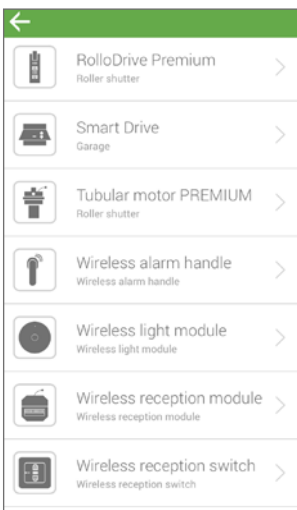


SC1.2

Select the Schellenberg device that you would like to pair.



SC1.3



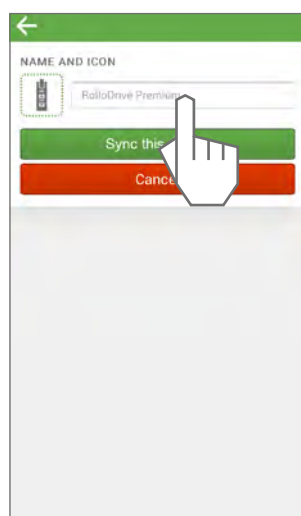
SC1.4



SC2: Pairing Schellenberg wireless roller shutter belt drive PREMIUM

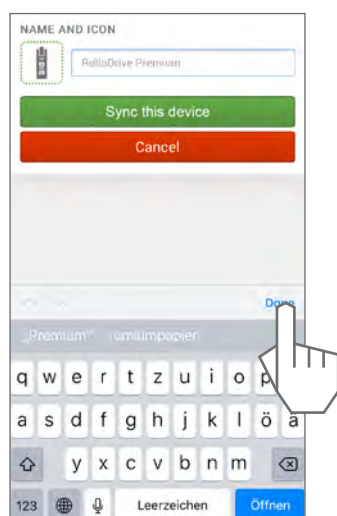
SC2.1

Name device



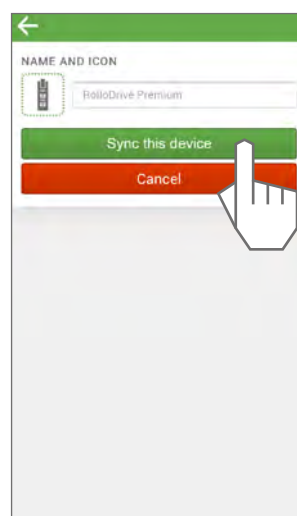
SC2.2

Save device name

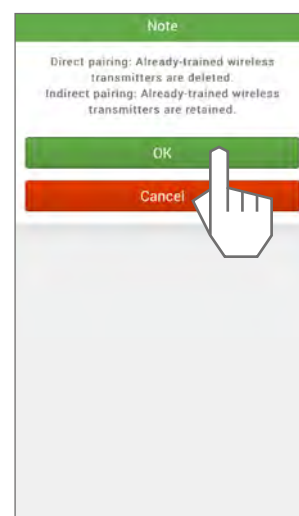


SC2.3

Pair device



SC2.4

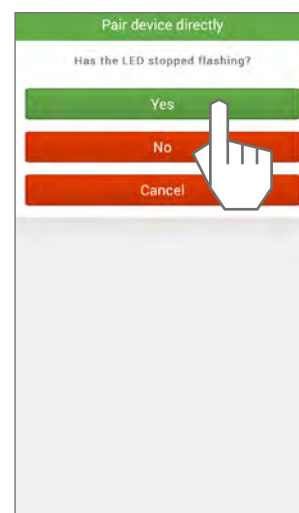
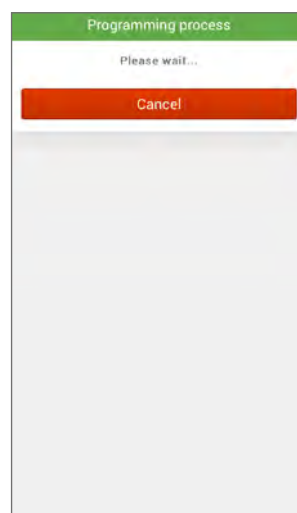
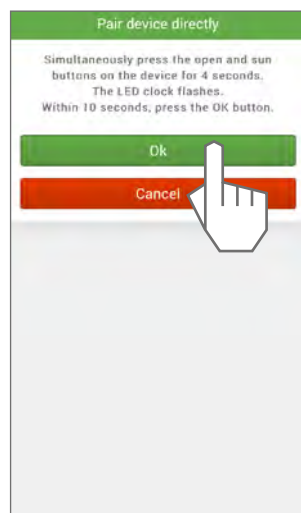


SC2.5

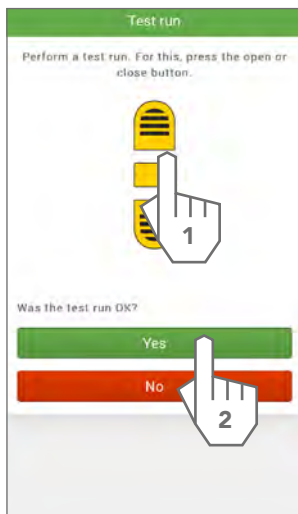
Pair the device directly or select the already-paired wireless transmitter that you want to copy.

Example: direct pairing. Carry out the steps shown and confirm.

SC2.6



SC2.7

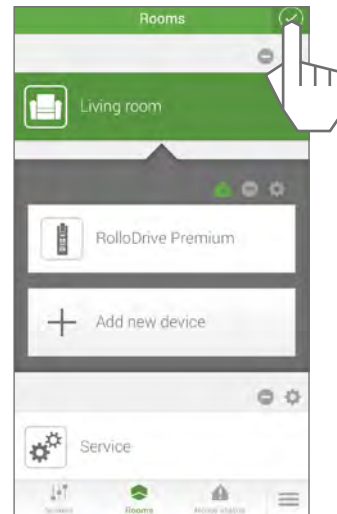


SC2.8



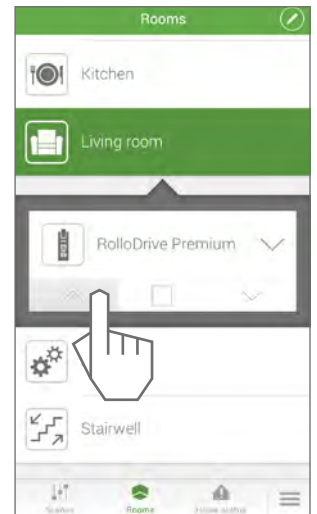
SC2.9

Exit the programming mode.



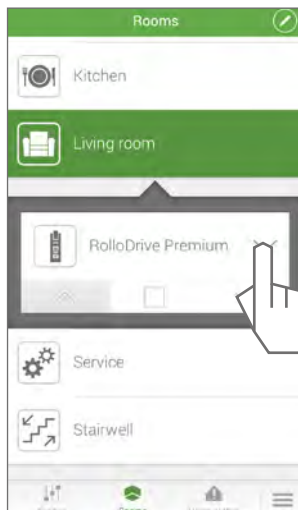
SC2.10

Control the product via the Rooms view.

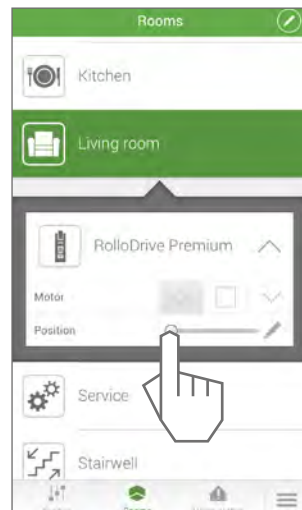


SC2.11

Open the menu for further control options.

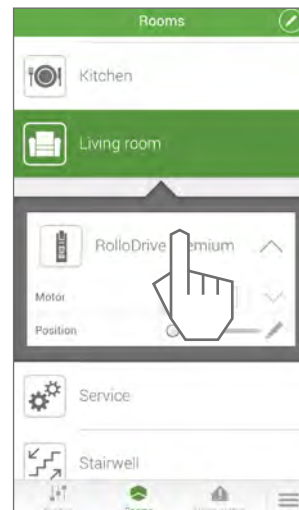


SC2.12



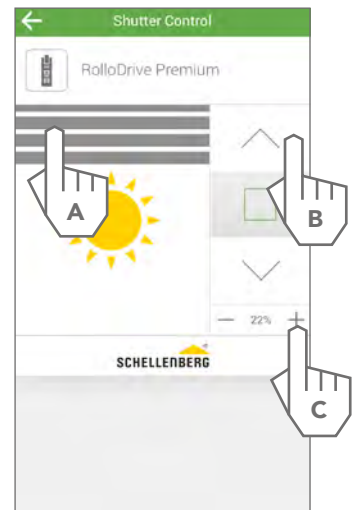
SC2.13

Select the detail view for further control options.



SC2.14

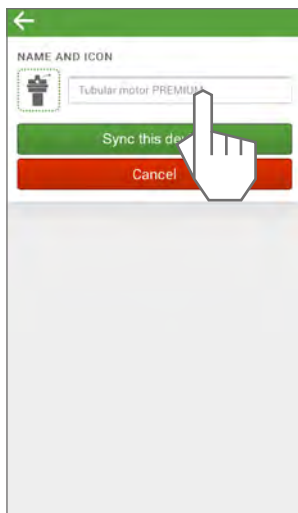
You can use the roller shutter (A), the arrow buttons (B) or the percentage figure (C) to control the device.



SC3: Pairing Schellenberg wireless tubular motor

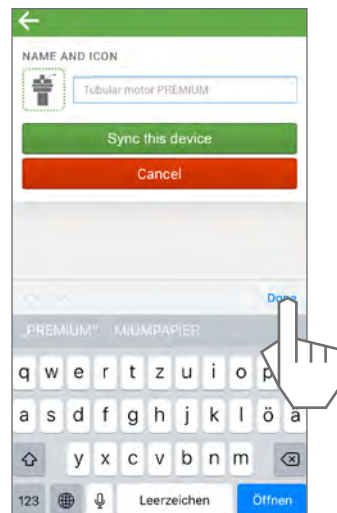
SC3.1

Name device



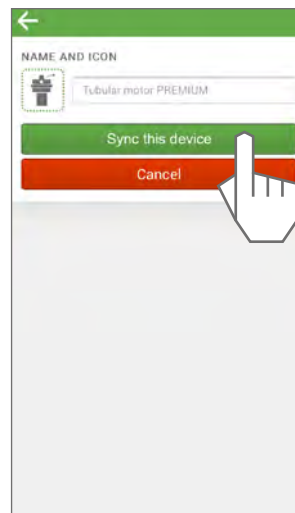
SC3.2

Save device name

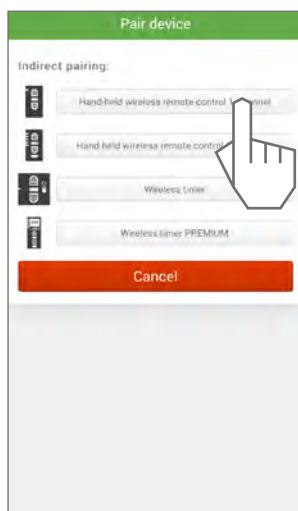


SC3.3

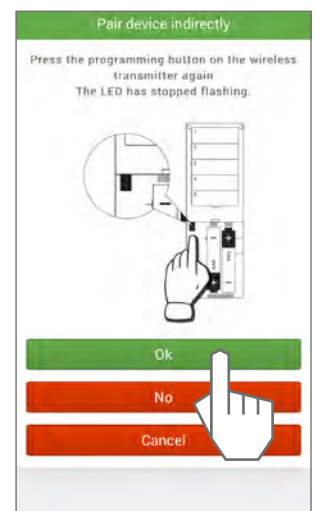
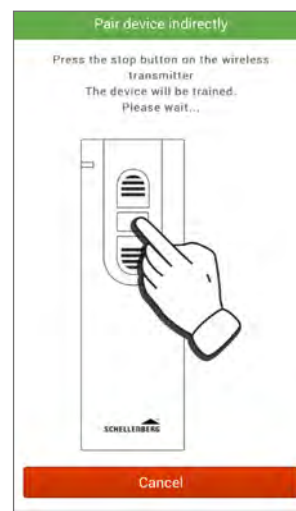
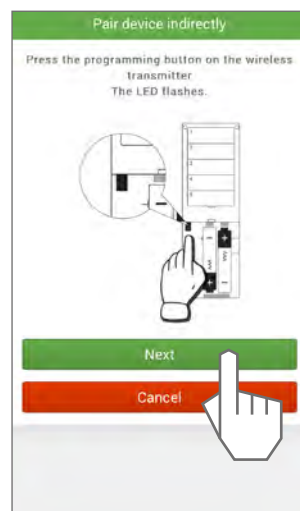
Pair device



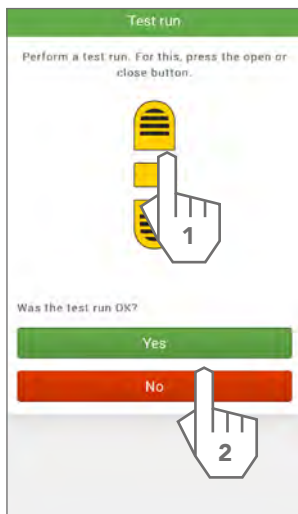
SC3.4



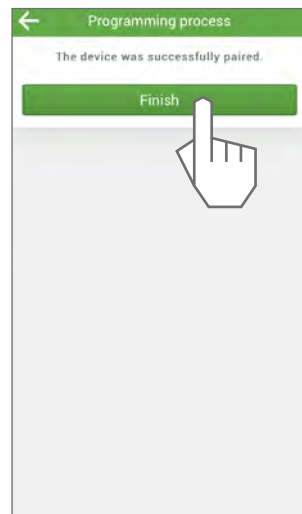
SC3.5



SC3.6

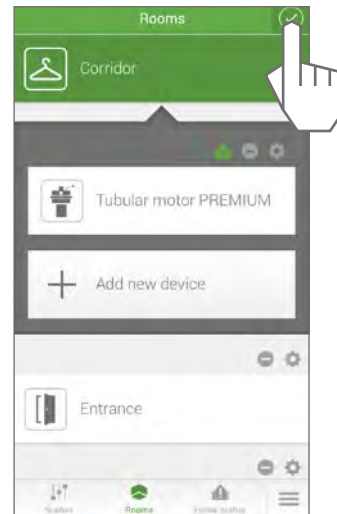


SC3.7



SC3.8

Exit the programming mode.



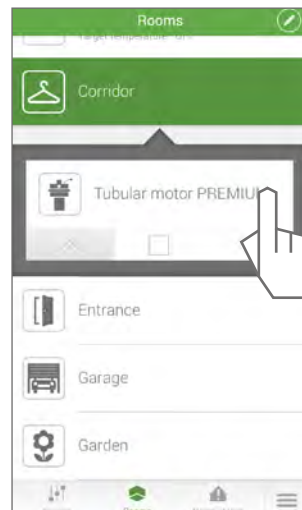
SC3.9

Control the product via the Rooms view.



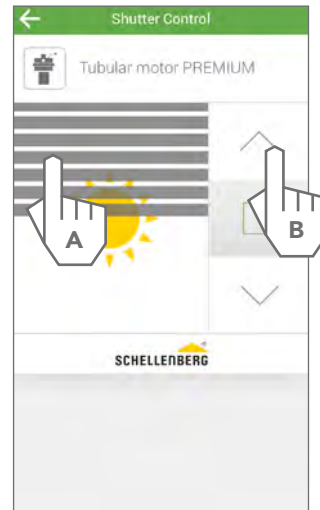
SC3.10

Select the detail view for further control options.



SC3.11

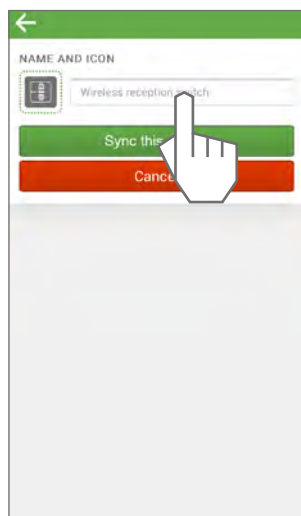
You can use the roller shutter (A) or the arrow buttons (B) to control the device.



SC4: Pairing Schellenberg wireless reception switch

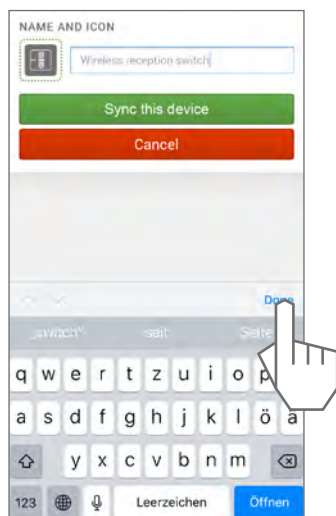
SC4.1

Name device



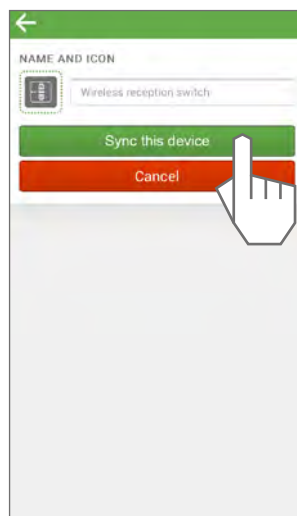
SC4.2

Save device name

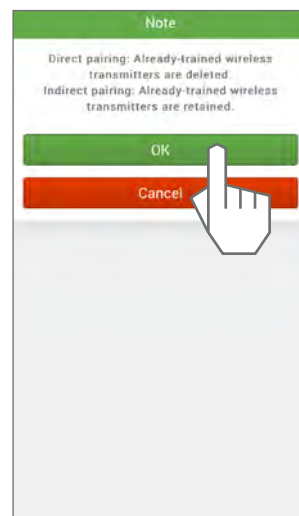


SC4.3

Pair device



SC4.4

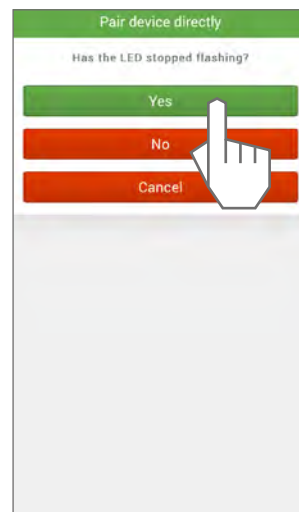
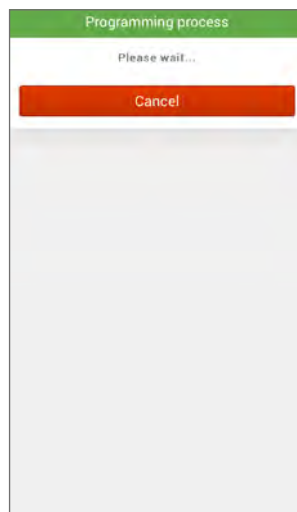
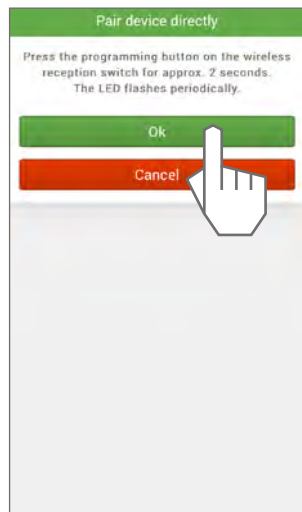


SC4.5

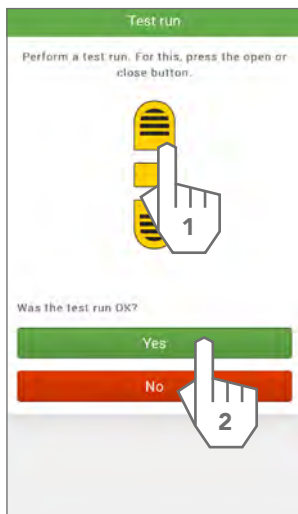
Pair the device directly or select the already-paired wireless transmitter that you want to copy.

Example: direct pairing. Carry out the steps shown and confirm.

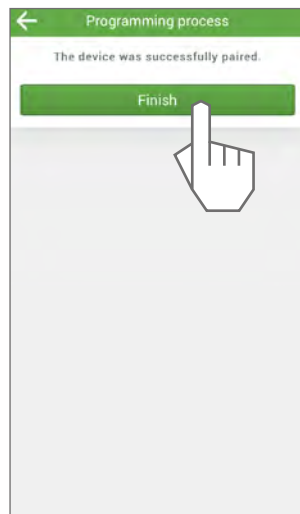
SC4.6



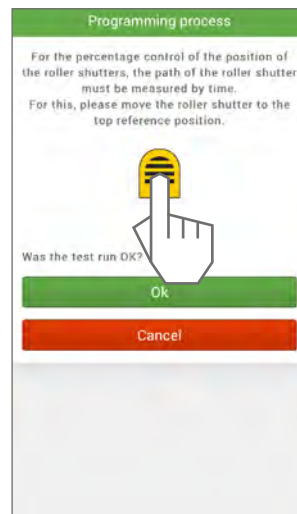
SC4.7



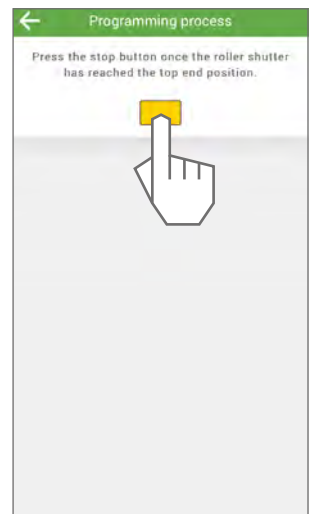
SC4.8



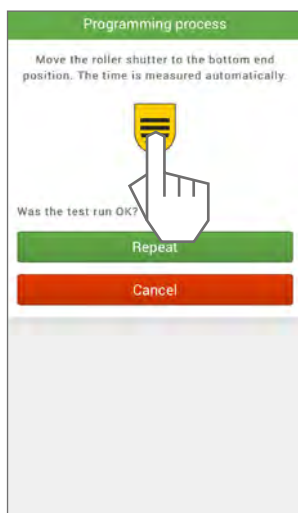
SC4.9



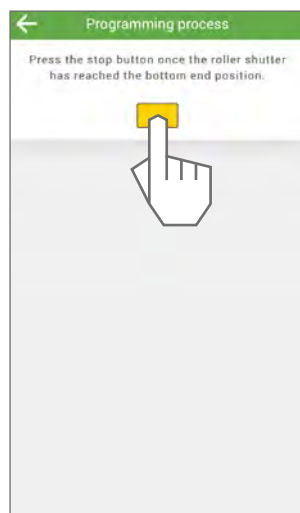
SC4.10



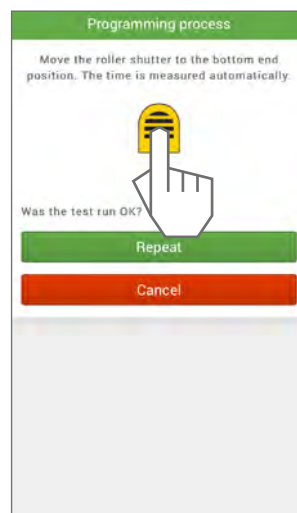
SC4.11



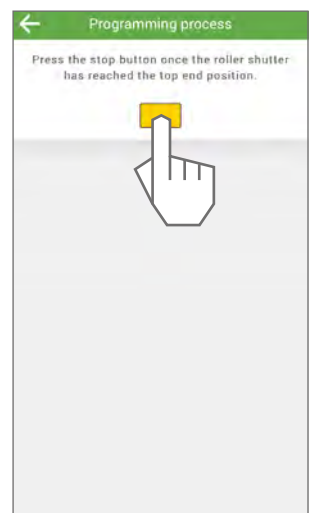
SC4.12



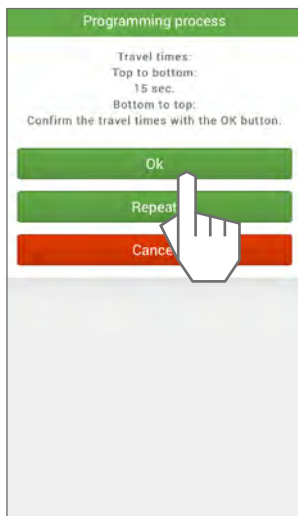
SC4.13



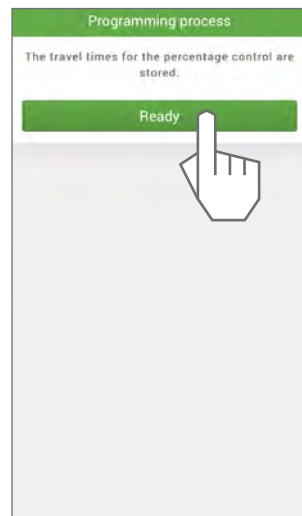
SC4.14



SC4.15

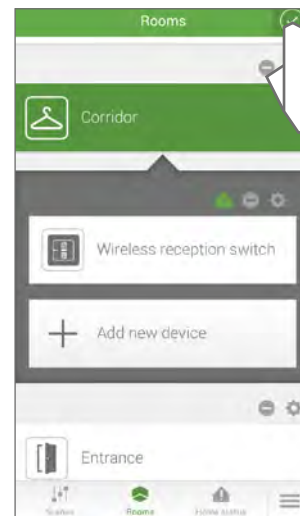


SC4.16



SC4.17

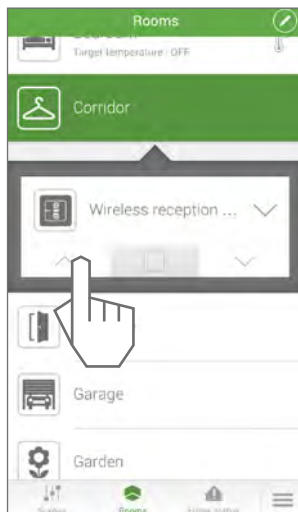
Exit the programming mode.



The roller shutter's travel times can be readjusted in the settings at any time.

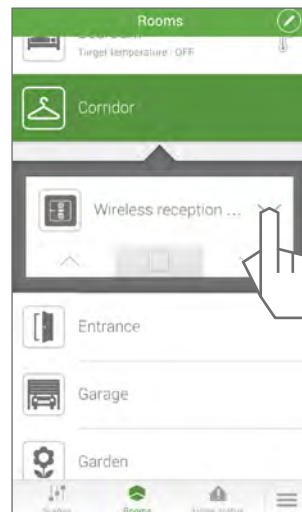
SC4.18

Control the product via the Rooms view.

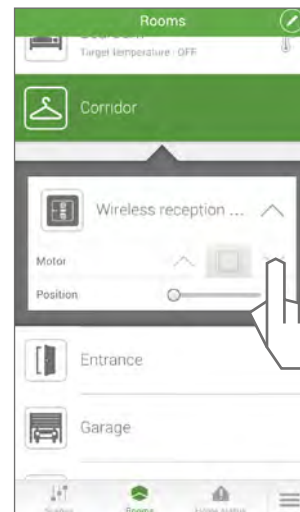


SC4.19

Open the menu for further control options.

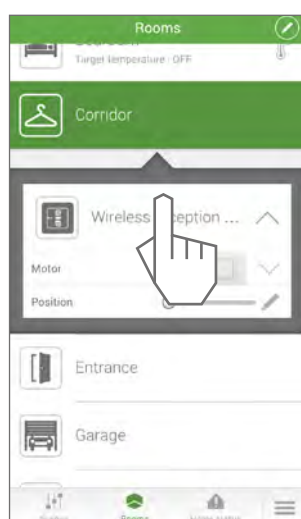


SC4.20



SC4.21

Select the detail view for further control options.



SC4.22

You can use the roller shutter (A), the arrow buttons (B) or the percentage figure (C) to control the device.



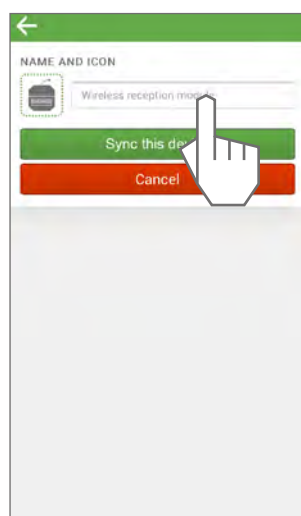
SC5: Pairing Schellenberg wireless reception module



Note: If direct pairing with the Smart Friends Box is carried out, any paired handheld transmitters are deleted. If paired handheld transmitters need to be retained, please select the "roller shutter" icon (cf. Chapter SC6).

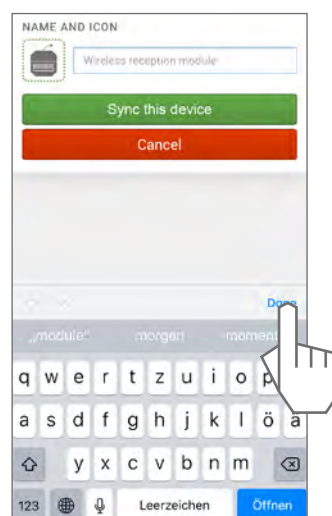
SC5.1

Name device



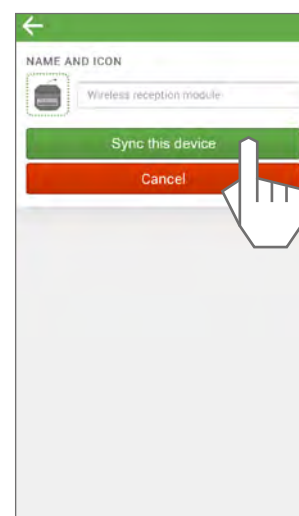
SC5.2

Save device name



SC5.3

Pair device



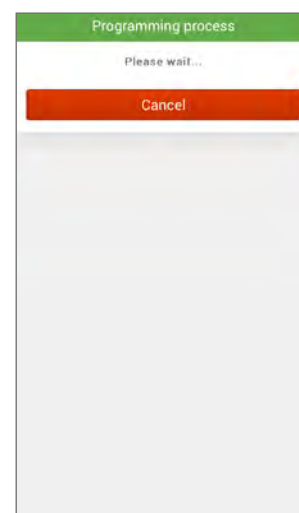
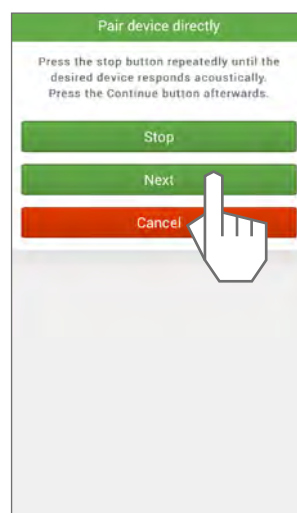
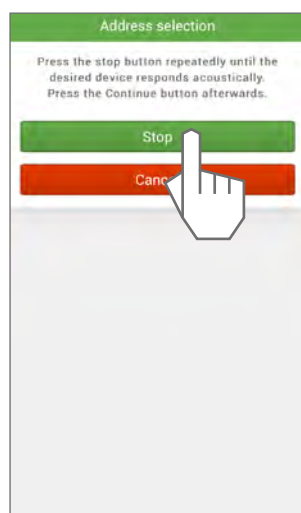
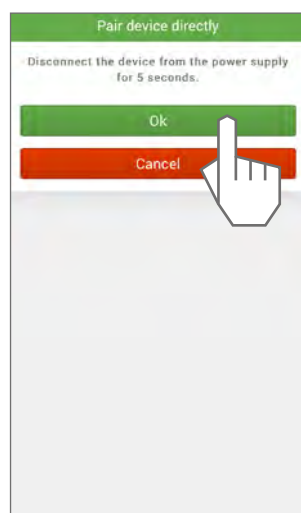
SC5.4

Carry out the steps shown and confirm.

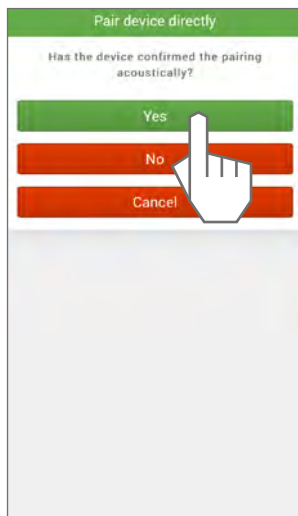
SC5.5

SC5.6

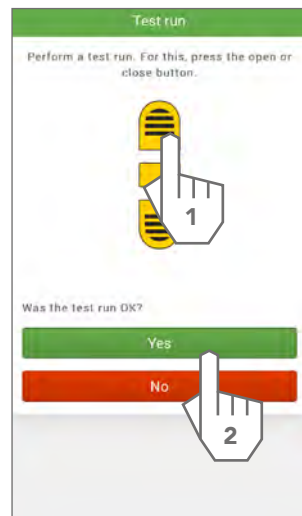
SC5.7



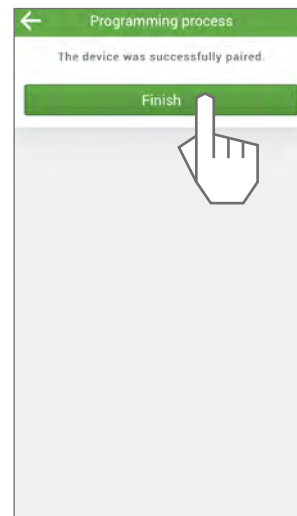
SC5.8



SC5.9

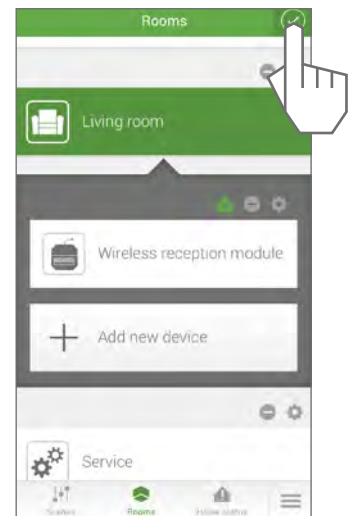


SC5.10



SC5.11

Exit the programming mode.



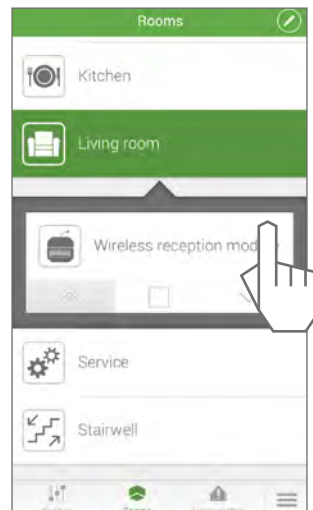
SC5.12

Control the product via the Rooms view.



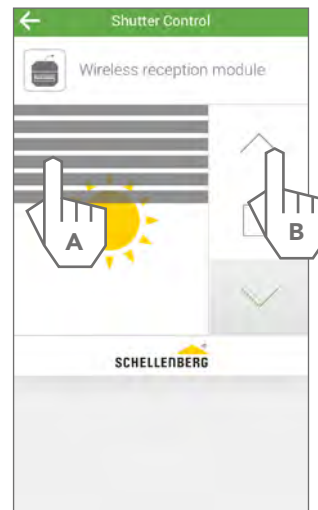
SC5.13

Select the detail view for further control options.



SC5.14

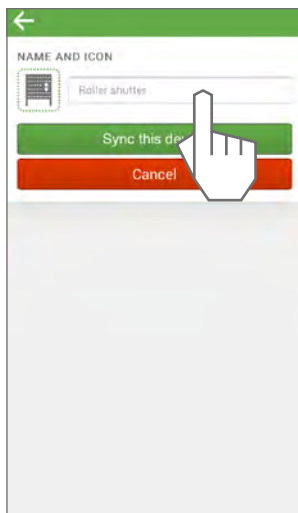
You can use the roller shutter (A) or the arrow buttons (B) to control the device.



SC6: Pairing Schellenberg wireless roller shutter drives

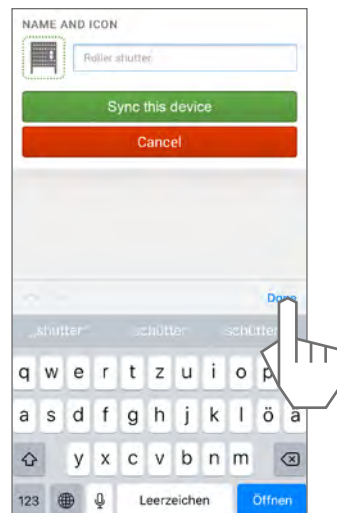
SC6.1

Name device



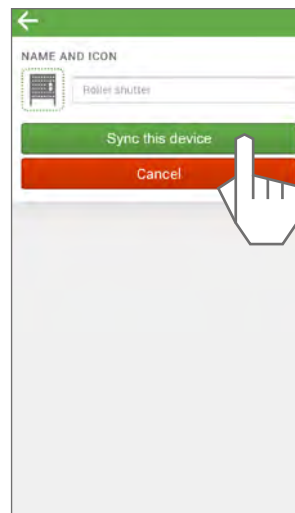
SC6.2

Save device name

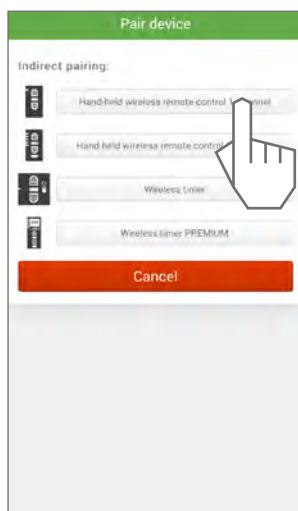


SC6.3

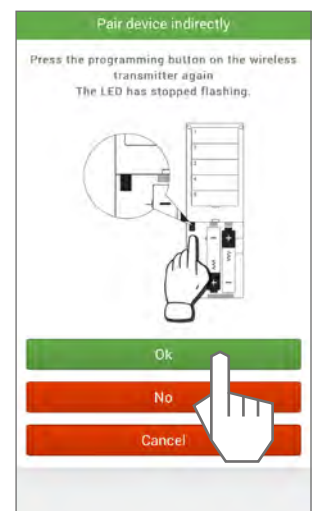
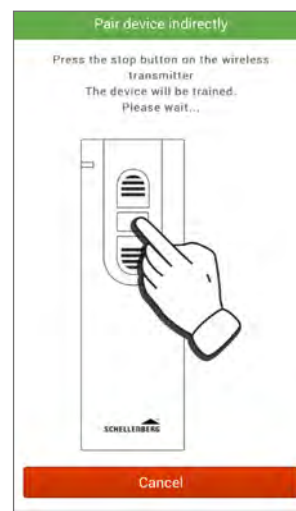
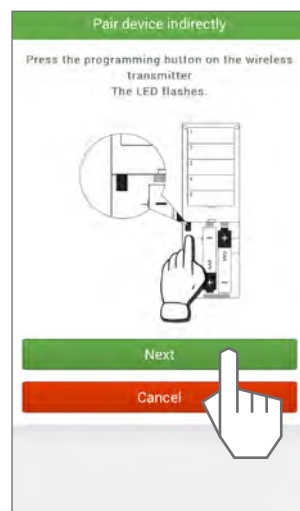
Pair device



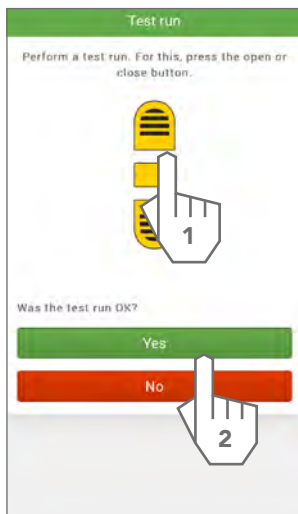
SC6.4



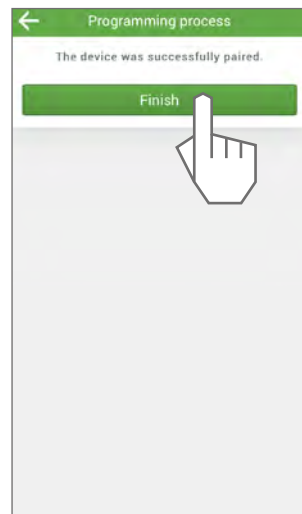
SC6.5



SC6.6

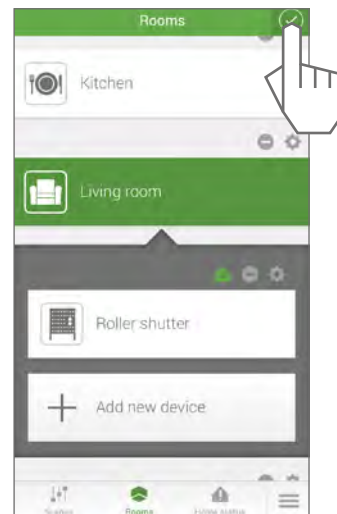


SC6.7



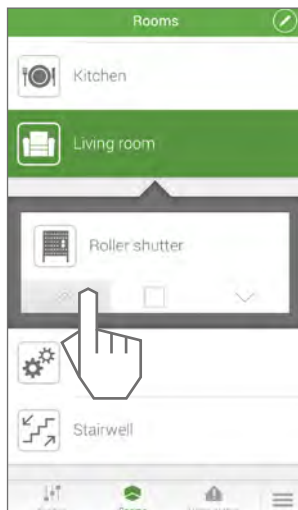
SC6.8

Exit the programming mode.



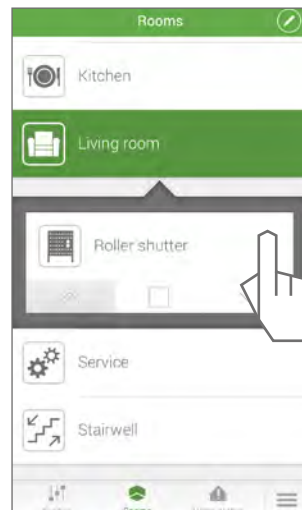
SC6.9

Control the product via the Rooms view.



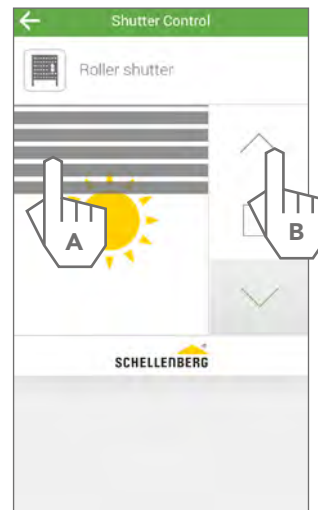
SC6.10

Select the detail view for further control options.



SC6.11

You can use the roller shutter (A) or the arrow buttons (B) to control the device.



SC7: Pairing Schellenberg wireless awning drive PLUS

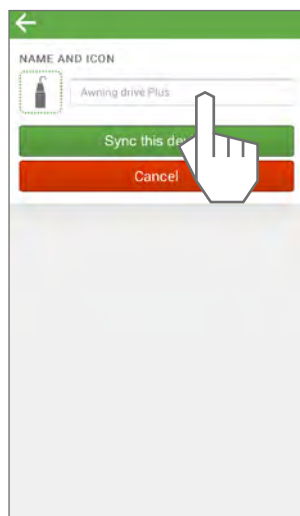


Note: If direct pairing with the Smart Friends Box is carried out, any paired handheld transmitters are deleted. If paired handheld transmitters need to be retained, please select the "awning" icon (cf. Chapter SC8).

Before carrying out pairing, set the end positions on the drive. (see the installation instructions for the product)

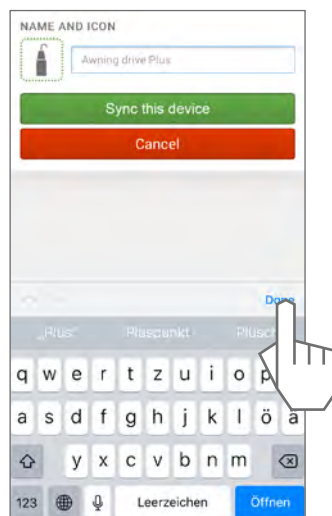
SC7.1

Name device



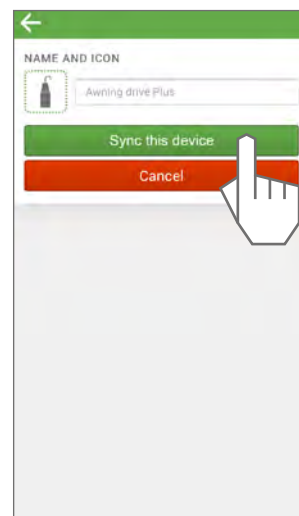
SC7.2

Save device name



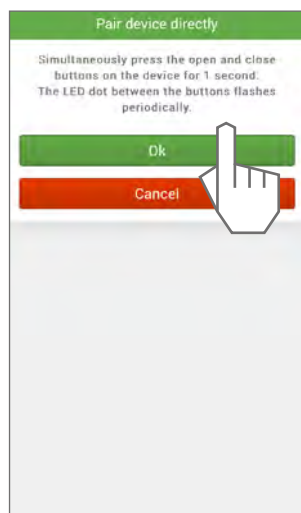
SC7.3

Pair device

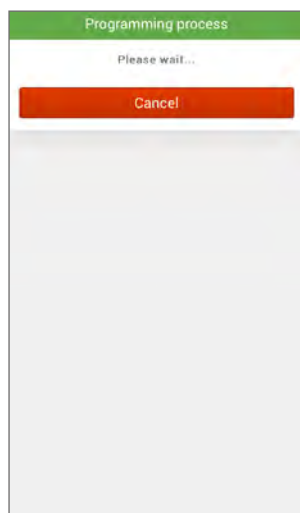


SC7.4

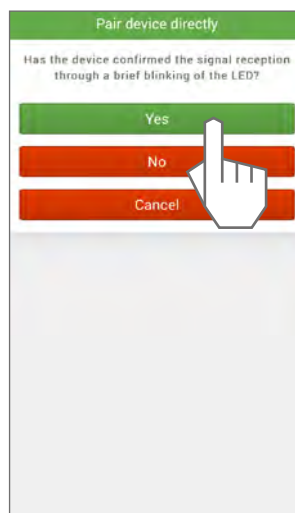
Carry out the steps shown and confirm.



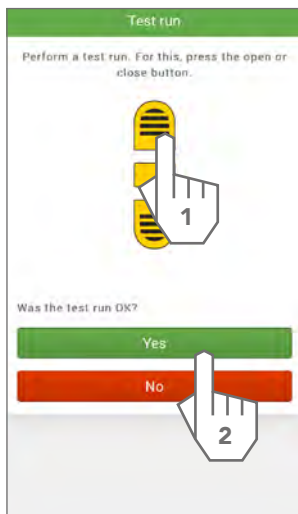
SC7.5



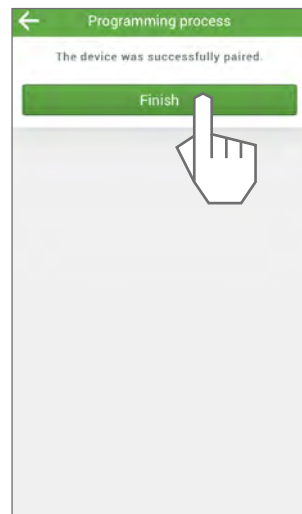
SC7.6



SC7.7

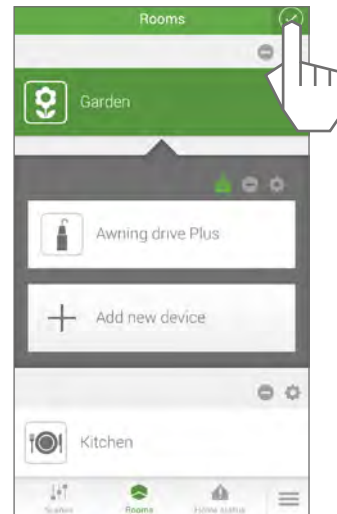


SC7.8



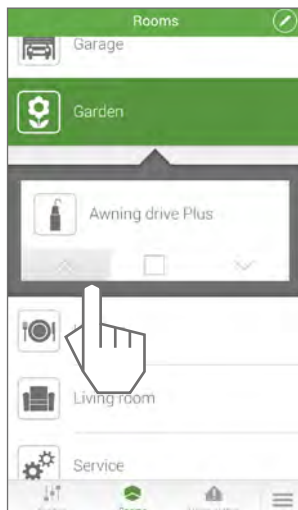
SC7.9

Exit the programming mode.



SC7.10

Control the product via the Rooms view.



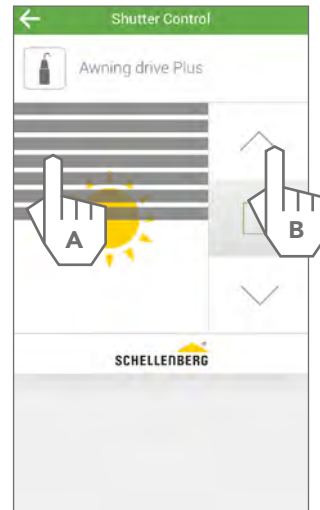
SC7.11

Select the detail view for further control options.



SC7.12

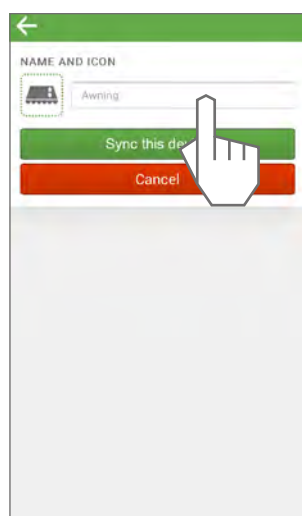
You can use the slider (A) or the arrow buttons (B) to control the device.



SC8: Pairing Schellenberg wireless awning drives/ wireless awning motors

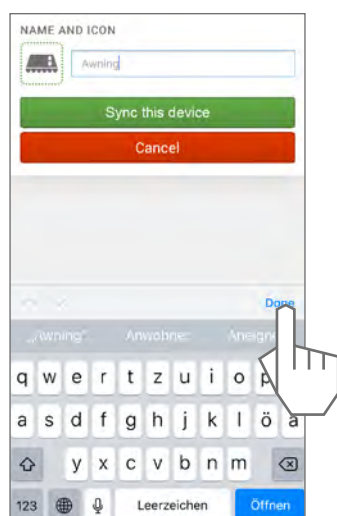
SC8.1

Name device



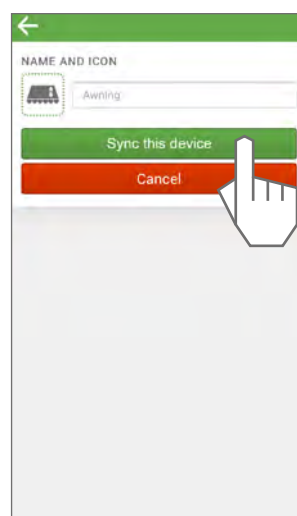
SC8.2

Save device name

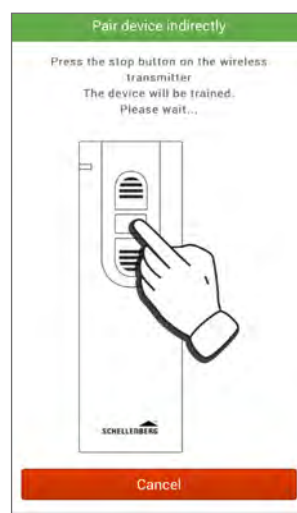
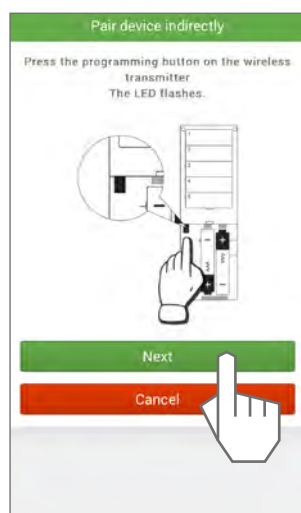
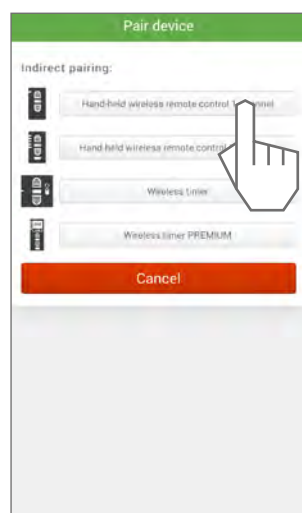


SC8.3

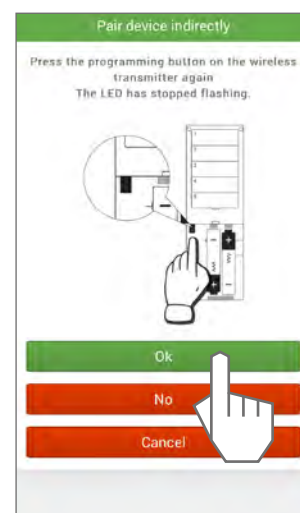
Pair device



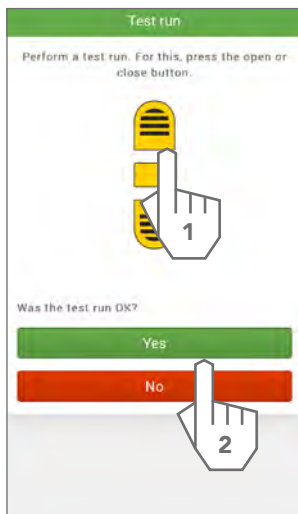
SC8.4



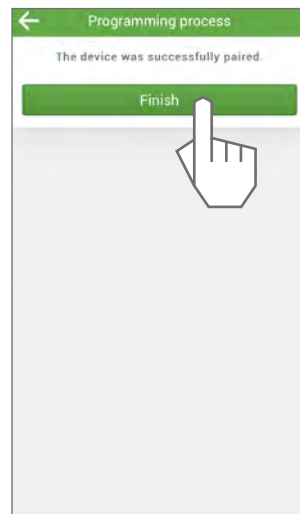
SC8.5



SC8.6



SC8.7



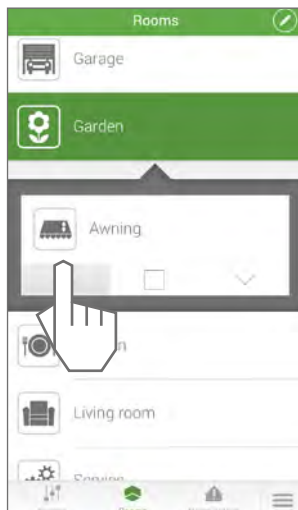
SC8.8

Exit the programming mode.



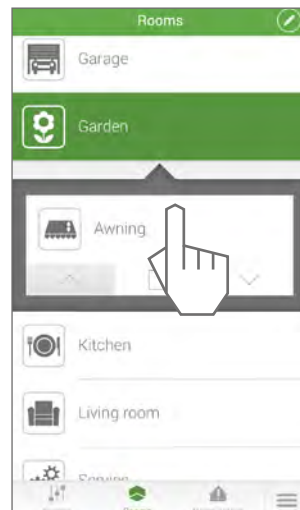
SC8.9

Control the product via the Rooms view.



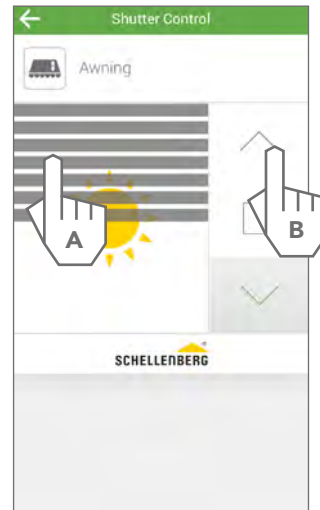
SC8.10

Select the detail view for further control options.



SC8.11

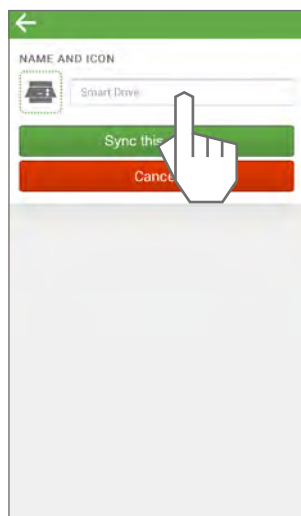
You can use the slider (A) or the arrow buttons (B) to control the device.



SC9: Pairing Schellenberg garage door drive Smart Drive PREMIUM

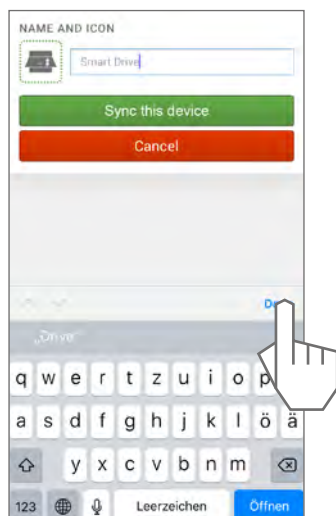
SC9.1

Name device



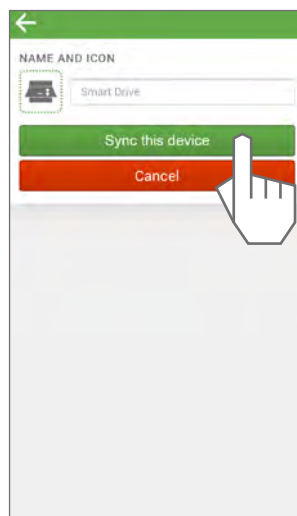
SC9.2

Save device name

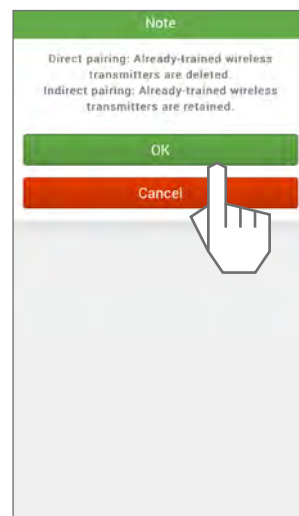


SC9.3

Pair device



SC9.4

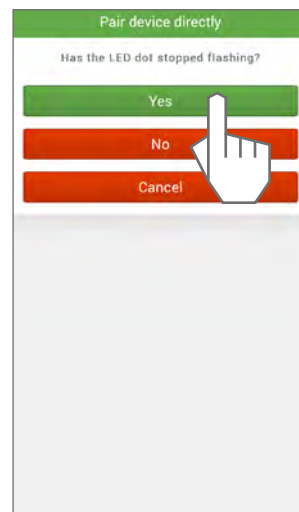
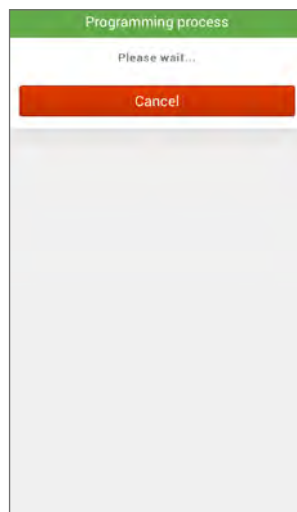
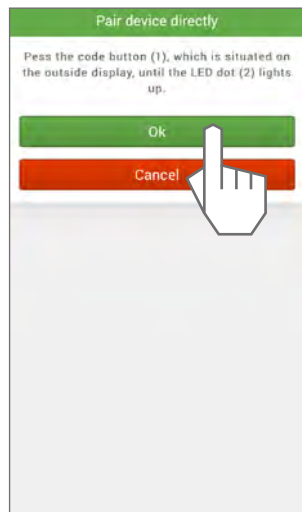


SC9.5

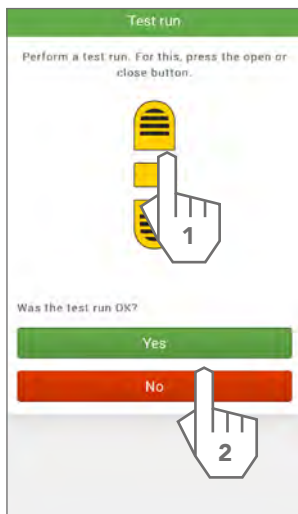
Pair the device directly or select the already-paired wireless transmitter that you want to copy.

Example: direct pairing. Carry out the steps shown and confirm.

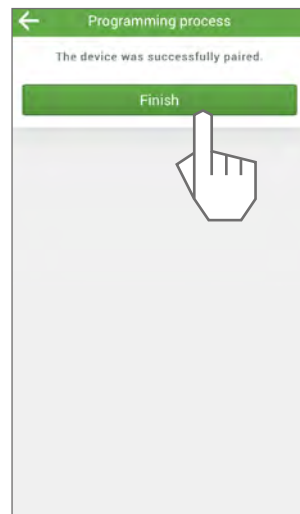
SC9.6



SC9.7

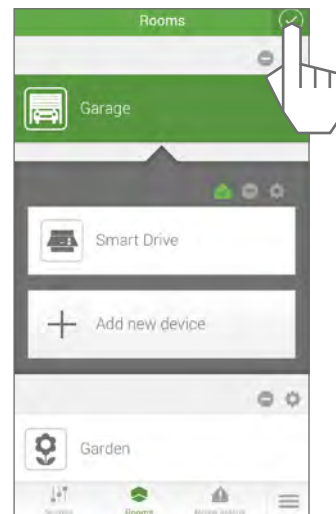


SC9.8



SC9.9

Exit the programming mode.



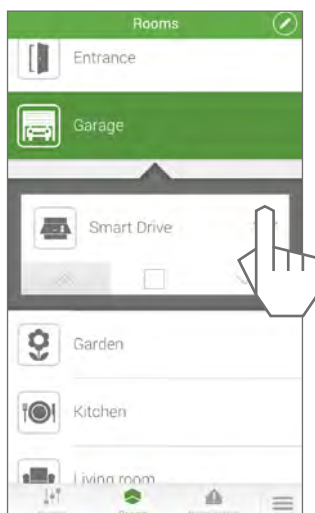
SC9.10

Control the product via the Rooms view.



SC9.11

Open the menu for further control options.



SC9.12



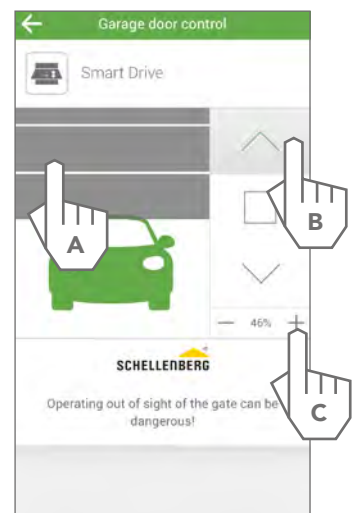
SC9.13

Select the detail view for further control options.



SC9.14

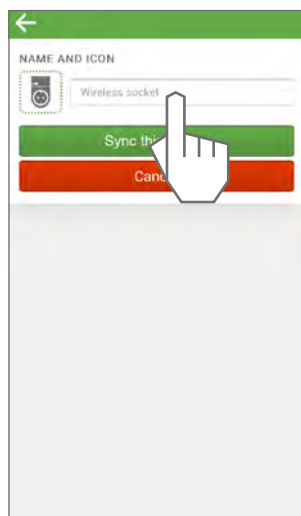
You can use the door (A), the arrow buttons (B) or the percentage figure (C) to control the device.



SC10: Pairing Schellenberg wireless socket

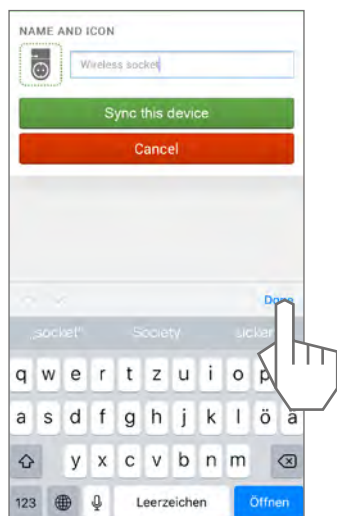
SC10.1

Name device



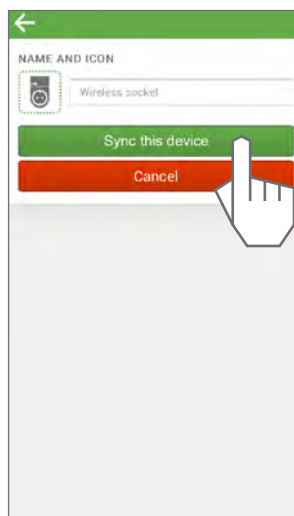
SC10.2

Save device name

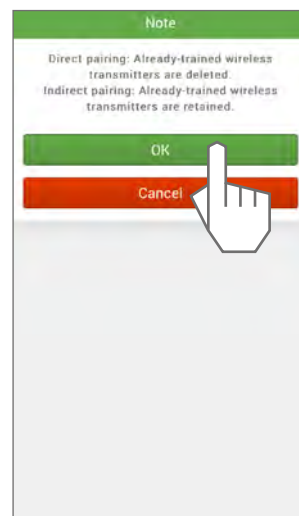


SC10.3

Pair device



SC10.4

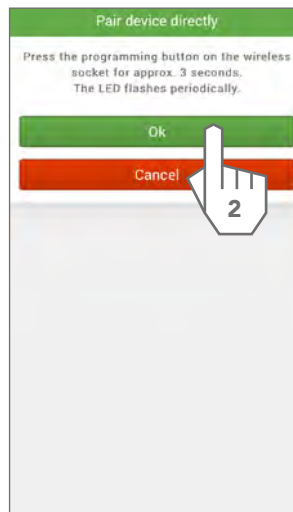
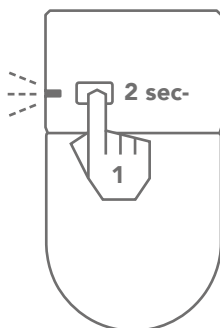


SC10.5

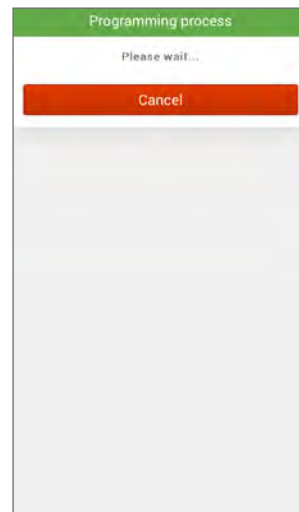
Pair the device directly or select the already-paired wireless transmitter that you want to copy.

SC10.6

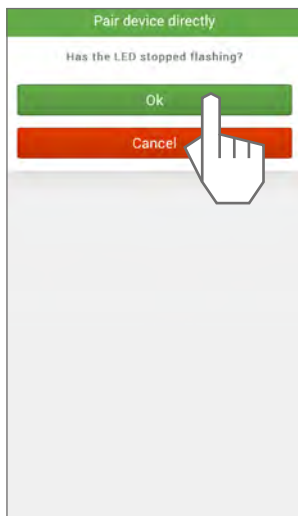
Example: direct pairing.
Carry out the steps shown and confirm.



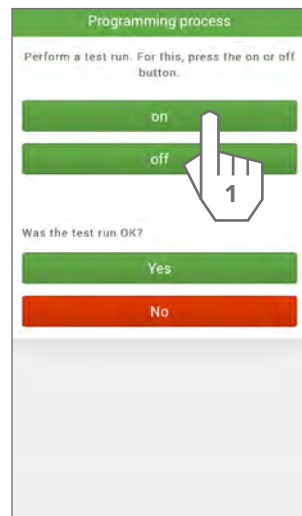
SC10.7



SC10.8



SC10.9

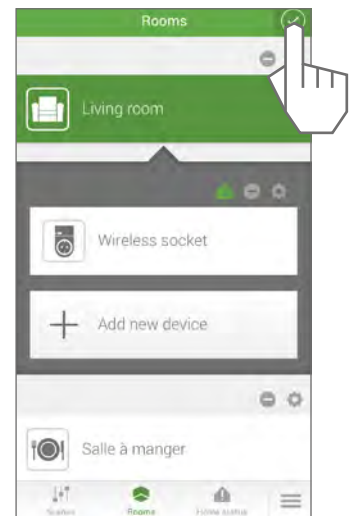


SC10.10



SC10.11

Exit the programming mode.



SC10.12

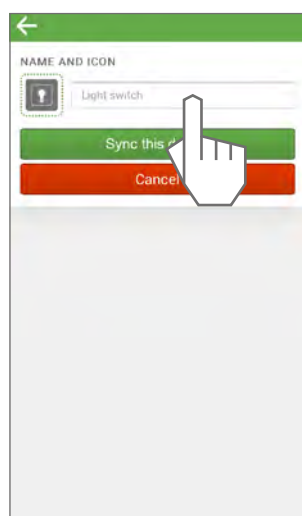
Control the product via the Rooms view.



SC11: Pairing Schellenberg wireless light switch

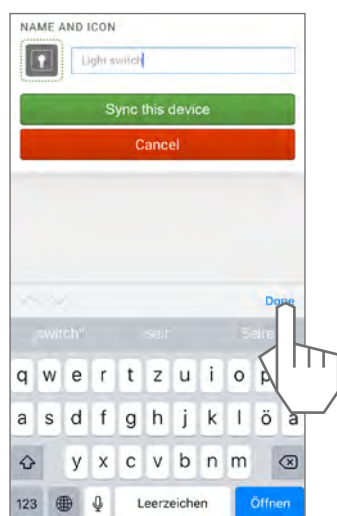
SC11.1

Name device



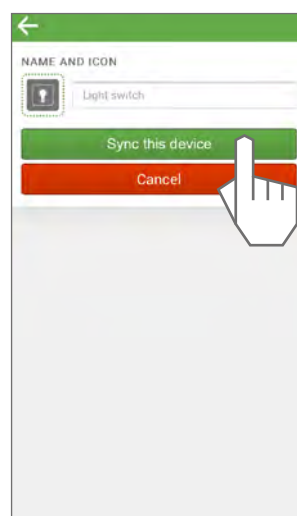
SC11.2

Save device name

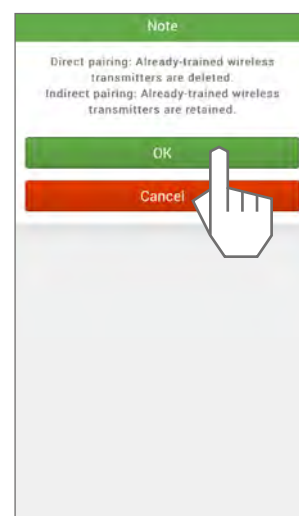


SC11.3

Pair device



SC11.4



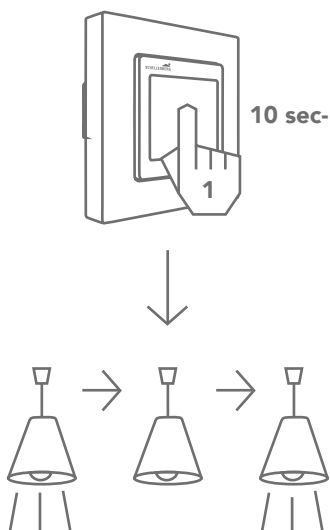
SC11.5

Pair the device directly or select the already-paired wireless transmitter that you want to copy.

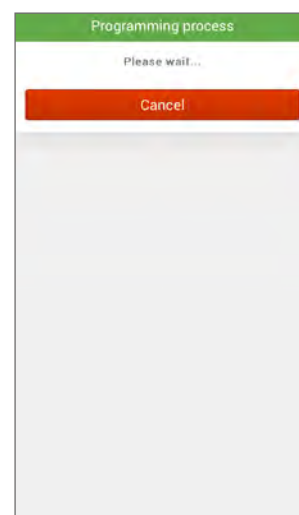
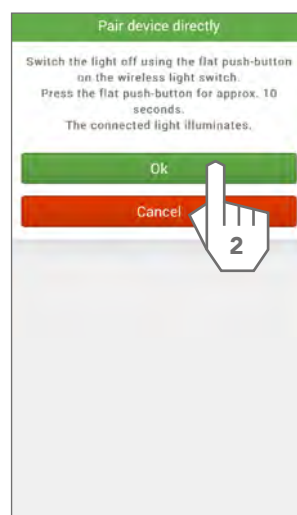


SC11.6

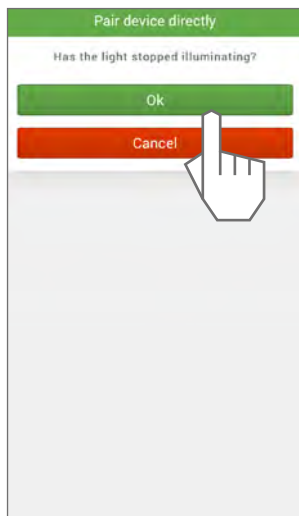
Example: direct pairing.
Carry out the steps shown and confirm.



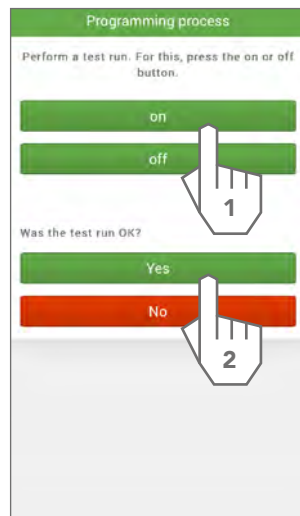
SC11.7



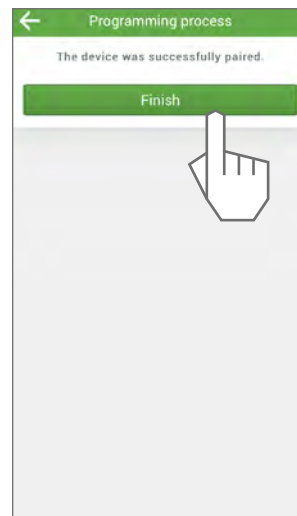
SC11.8



SC11.9



SC11.10



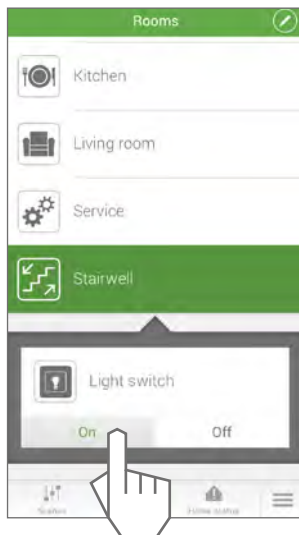
SC11.11

Exit the programming mode.



SC11.12

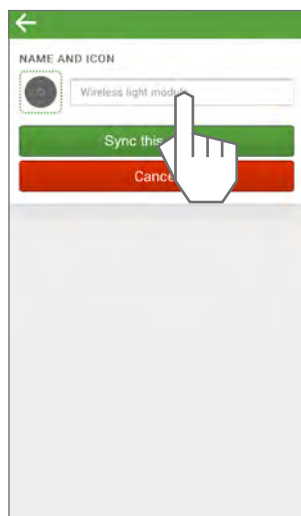
Control the product via the Rooms view.



SC12: Pairing Schellenberg wireless light module

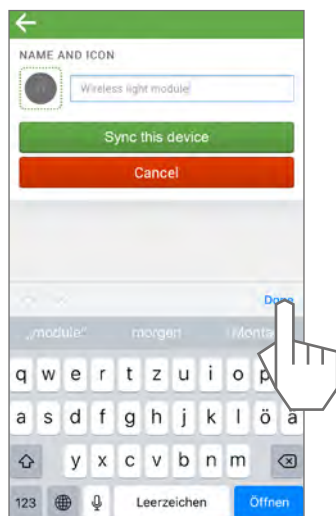
SC12.1

Name device



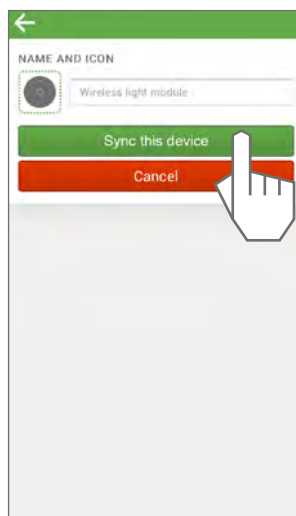
SC12.2

Save device name

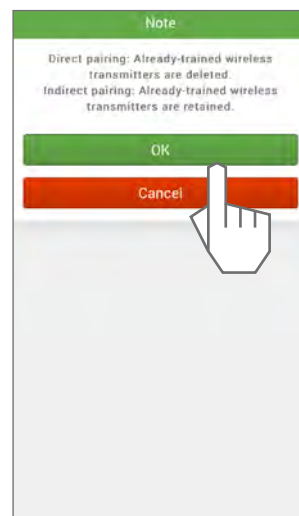


SC12.3

Pair device



SC12.4



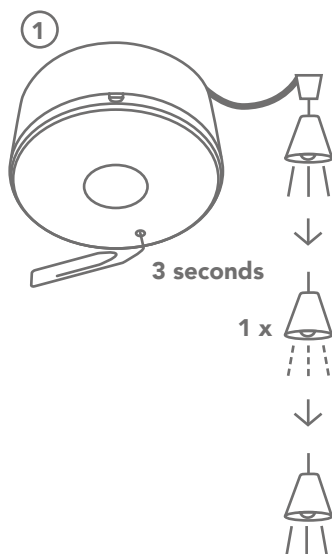
SC12.5

Pair the device directly or select the already-paired wireless transmitter that you want to copy.

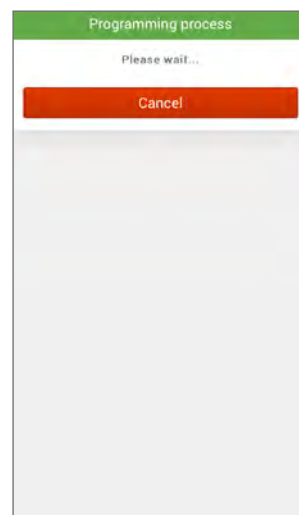
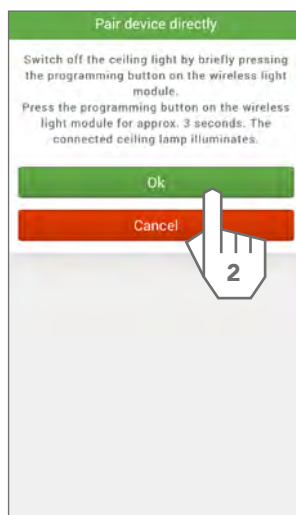


SC12.6

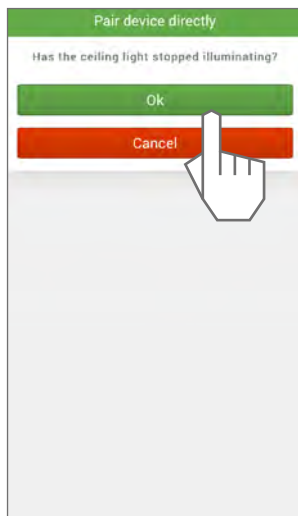
Example: direct pairing.
Carry out the steps shown and confirm.



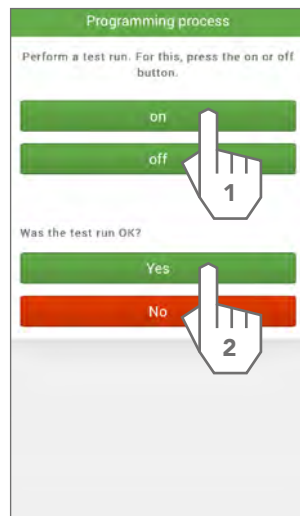
SC12.7



SC12.8



SC12.9



SC12.10



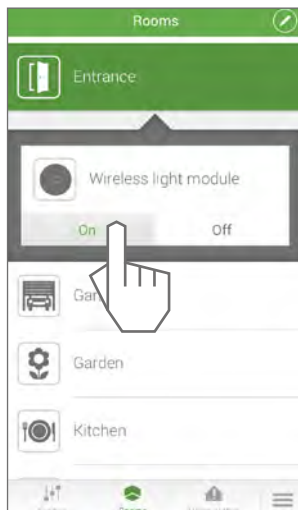
SC12.11

Exit the programming mode.



SC12.12

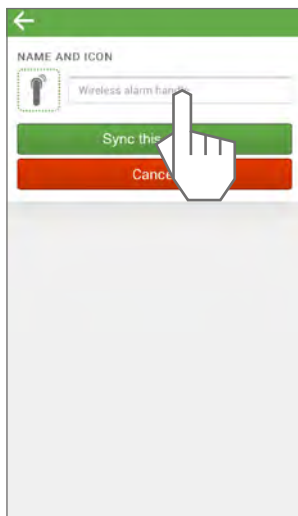
Control the product via the Rooms view.



SC13: Pairing Schellenberg wireless alarm handle

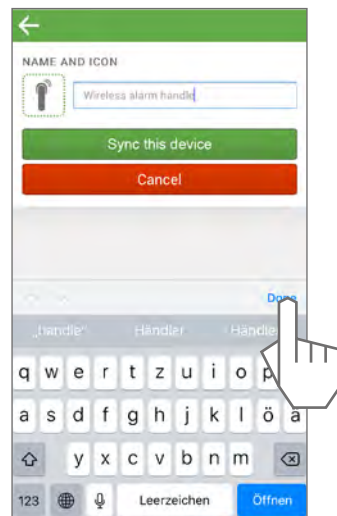
SC13.1

Name device



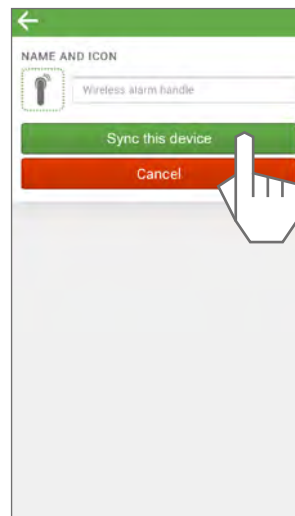
SC13.2

Save device name



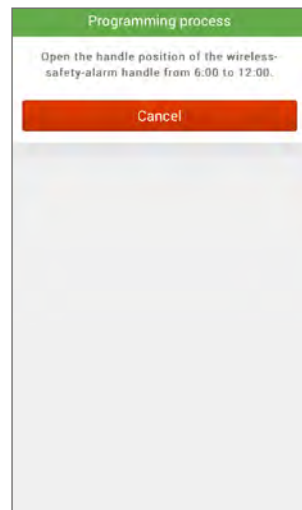
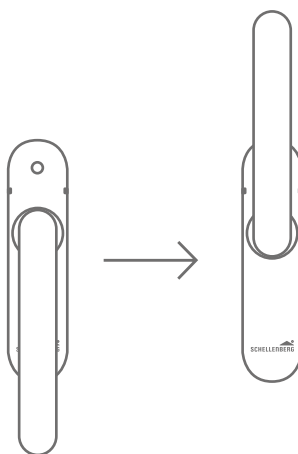
SC13.3

Pair device

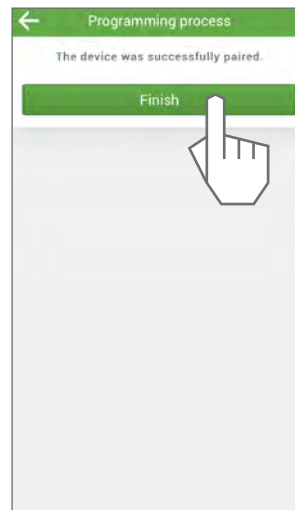


SC13.4

Carry out the steps shown and confirm.

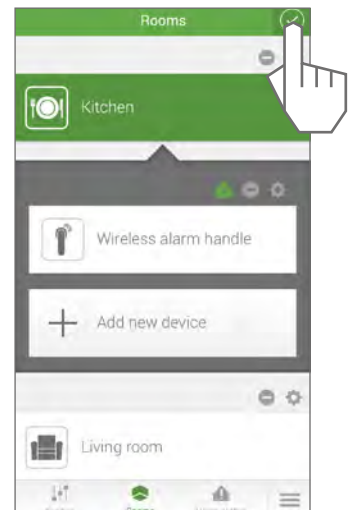


SC13.5



SC13.6

Exit the programming mode.

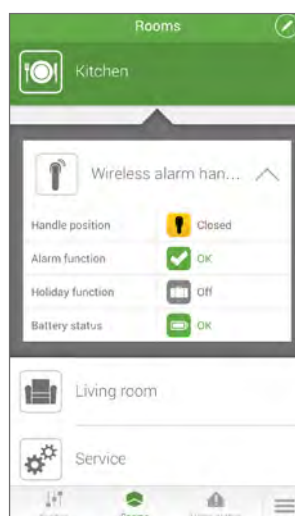


SC13.7

Select the detail view for further status information.



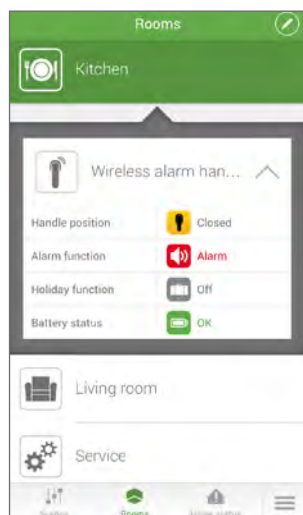
SC13.8



Handle position display:
Closed, open or at an angle

Battery status: Warns you in good time that you need to replace the batteries.

SC13.9



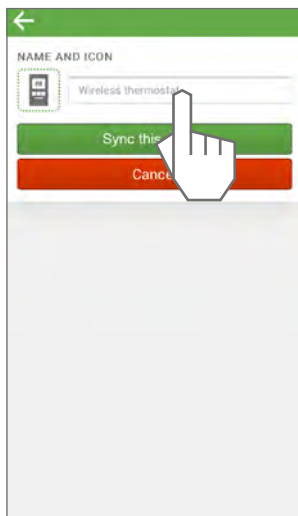
Alarm: In the event of an alarm, you receive a message in the app.

Holiday function: Shows you whether the holiday function (2nd red LED on the handle lights up), which can be switched on manually, is enabled.

SC14: Pairing Schellenberg wireless thermostat

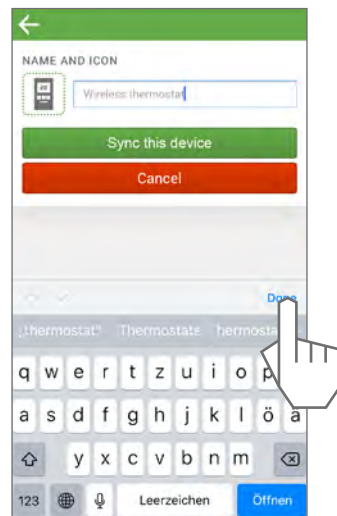
SC14.1

Name device



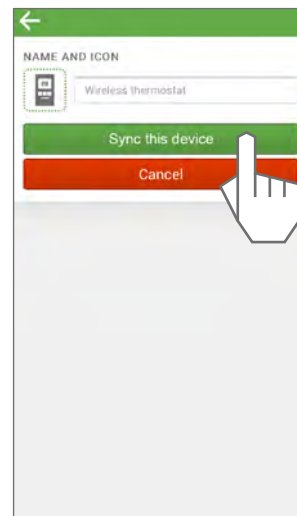
SC14.2

Save device name



SC14.3

Pair device

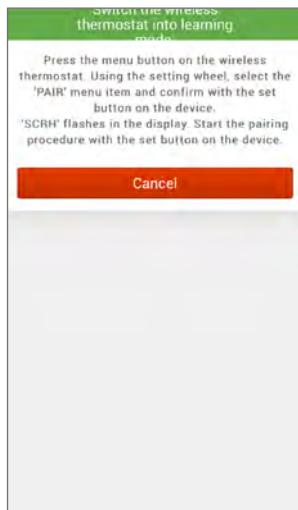


Important note:

The wireless thermostat must be in the "manual" operating mode for pairing to be carried out.

SC14.4

Carry out the steps shown and confirm.



SC14.5

Exit the programming mode.

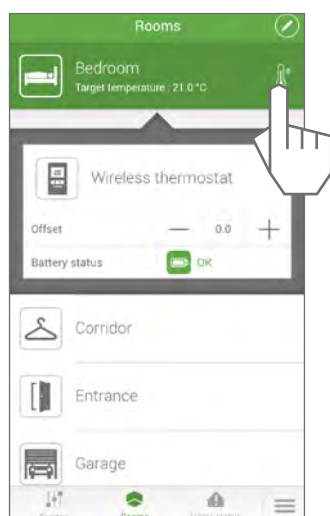


SC14.6

Exit the programming mode.



SC14.7

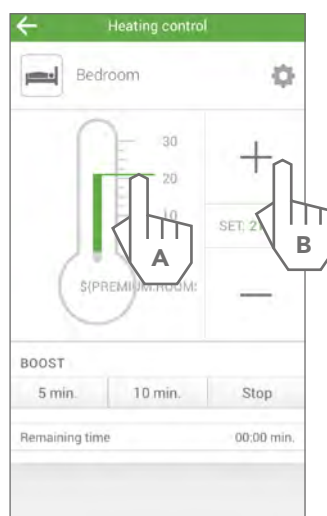


Single-room control:

Group control of all the wireless thermostats paired in the room.

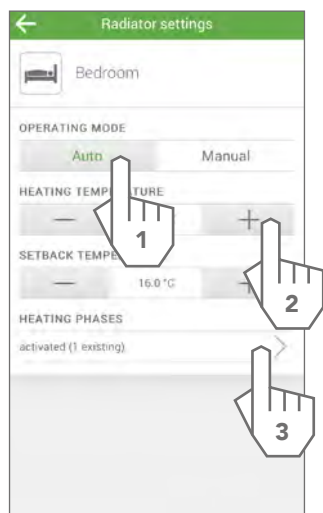
SC14.8

You can use the thermometer (A) or the buttons (B) to regulate the temperature.

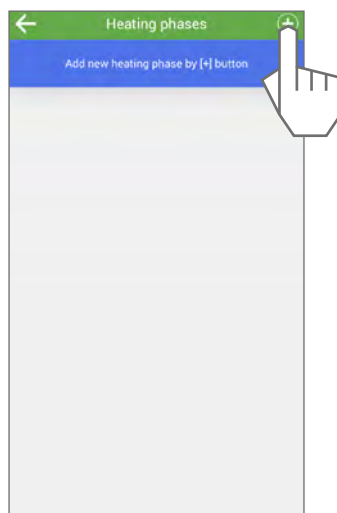


SC14.9

Set up the automatic control of the room temperature.

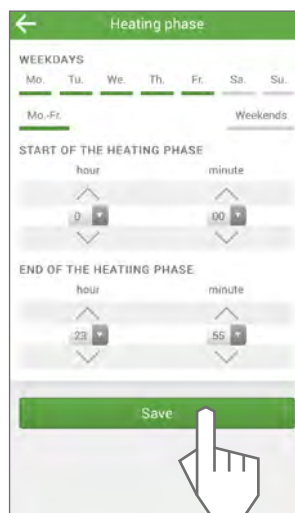


SC14.10



SC14.11

Set up desired heating phases.



SC14.12

Exit the set-up of the heating phases.



Set up additional heating phases.



Note:

Only heating phases are set up here.
Energy-saving phases automatically take place between the heating phases.

SC14.13

Set the room temperature manually.



SC14.14



SC14.15

Briefly set the thermostat to the maximum temperature (boost function).

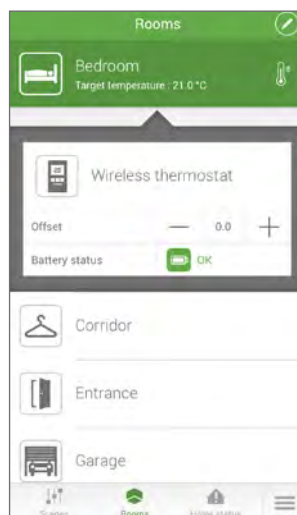


SC14.16

After the time has elapsed, the temperature previously set is automatically displayed.



SC14.17



Offset:

Individual, time-limited change in the temperature of a wireless thermostat by max. +/- 5°C. After switching to a heating or energy-saving phase, the programmed heating or energy-saving temperature is restored.

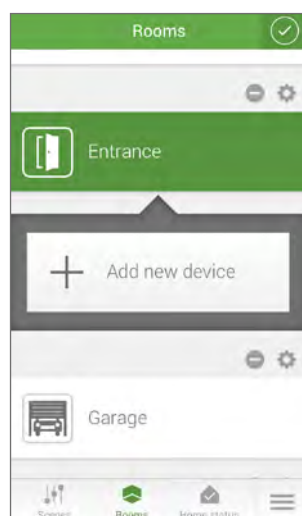
The offset is not displayed on either the device or the single-room control.

The offset is automatically terminated by the subsequent heating or energy-sav-

P1: Connection from Paulmann product to Smart Friends Box

P1.1

Lamps and luminaires. Open the **Rooms** view.
Select the **pencil symbol** to switch to editing mode.



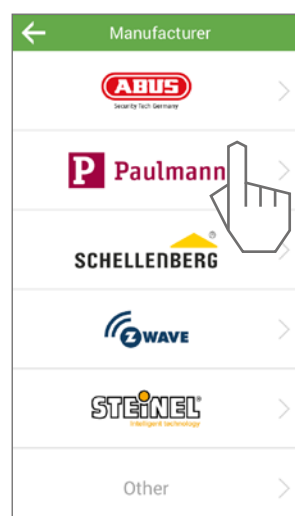
Then select the **plus symbol** to add a new device.



Note: Make sure that the devices to be paired are in the default setting and have not been previously paired, for example, with another gateway or remote control.

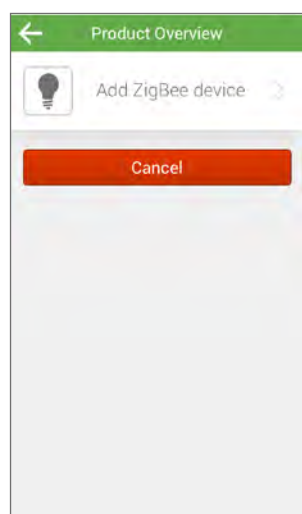
P1.2

Select **Paulmann**.



P1.3

Click on **Add ZigBee device** or end the pairing process by clicking **Cancel**.



P1.4

The Smart Friends Box will now search for Paulmann to pair with.
If a lamp or luminaire is found, these will flash in order until the pairing process is complete. The Smart Friends Box will pair with all devices within range that are in the default setting and connected to a power supply.



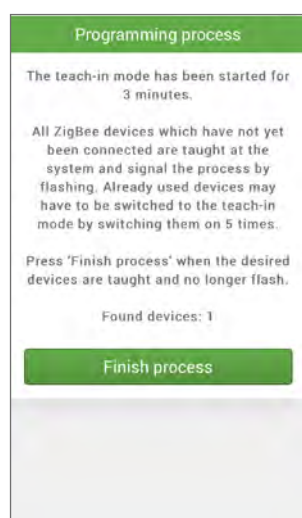
Note: Like other special items, battery-operated products (e.g. a remote control) must be switched to pairing mode manually. Please read the information for the individual devices below.



Tip: If you want to pair multiple devices in different rooms, it is recommended that you proceed one room at a time. This makes them easier to allocate!

P1.5

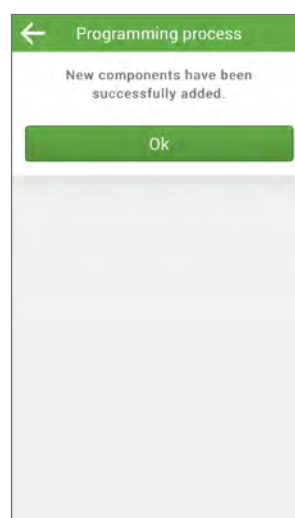
The pairing process will now proceed automatically.
All devices connected to a power supply can now be found.



Devices such as battery-powered devices must be manually switched to pairing mode. To do so, see the explanation for the respective device in section P4 or the accompanying installation instructions for the device.

P1.6

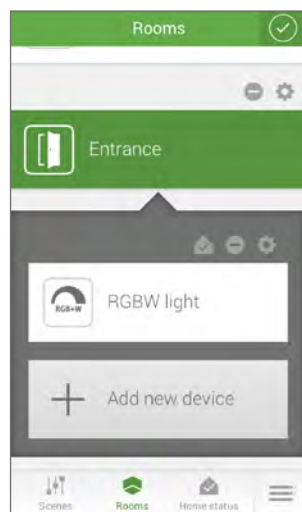
Once all devices have been found and pairing has been confirmed, you can exit the pairing process by clicking **Finish process**.



A confirmation will appear informing you that the pairing process was successful.

P1.7

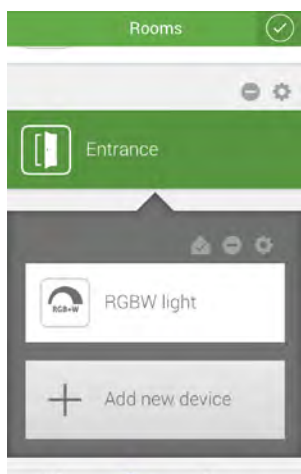
You can now exit the pairing process by clicking on the **checkbox symbol** in the top right.



P2: Change the device settings of Paulmann products

P2.1

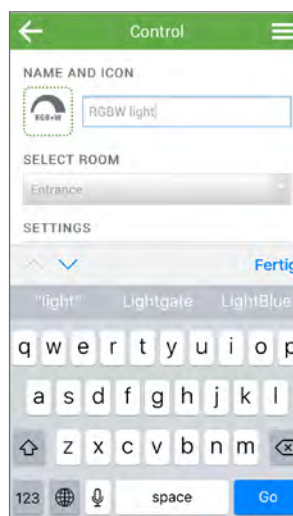
Open the **Rooms** view. Select the **pencil symbol** to switch to editing mode.



Then click the **gear symbol** above the device in question.

P2.2

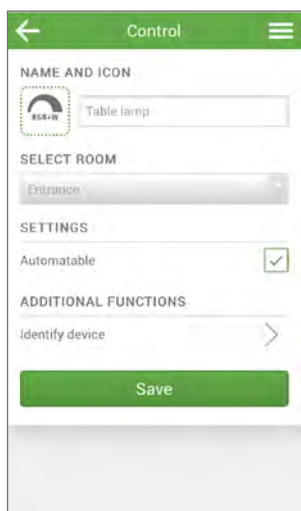
You are now in the device settings view.



Tip: If you have paired multiple devices at once, you can identify the respective lamp or luminaire using the additional functions by clicking "Identify device": your device will flash for a short time!

P2.3

Change the device name by clicking on the name field.



P2.4

Close the name field and confirm your input by saving.



P2.5

To change the icon, click on the existing icon or empty field and select an icon of your choice from the list displayed.

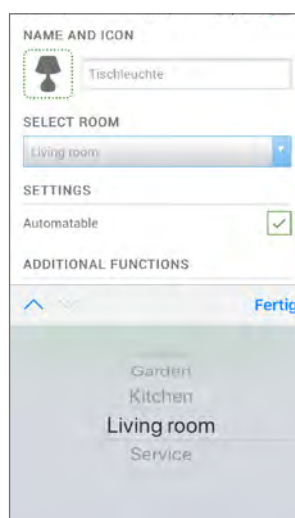


Tip: You can also select the icons of other Smart Friends partners. These icons are used during pairing for simpler user operation. However, for the changes described here, all icons are available for selection when pairing, regardless of function.

Confirm your selection by pressing **Save!**

P2.6

To change the room allocation, click on the room name. This will open a list of room names from which you can select the new allocation.

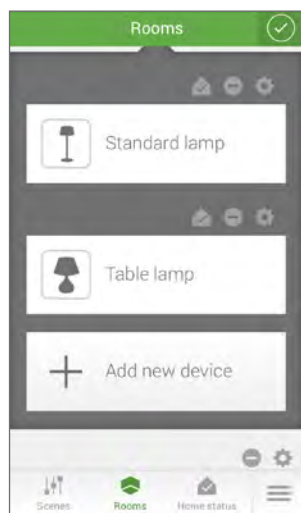


Note: Depending on the smartphone and operating system, the display may vary from the example shown in the image (scroll lists, etc.).

Confirm your selection by pressing **Save!**

P2.7

You can now exit the device settings by clicking on the **checkbox symbol** in the top right.

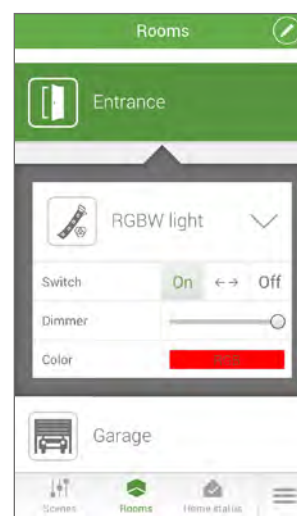


P3: User operation and further installation information about Paulmann products in the "Rooms" view

Once all components have been allocated to a room, the Paulmann device and the Smart Friends Box are fully synchronised.
Depending on the device type, there are different user menus available to you.

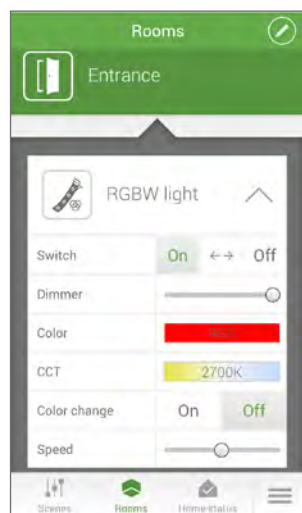
P3.1

Click on the **triangle symbol** to see further control options.



P3.2

RGB and RGBW devices.
Colour selection sub-menu.



On/Off as well as **<->** toggle between one setting and another.

Dimming from 0-100%

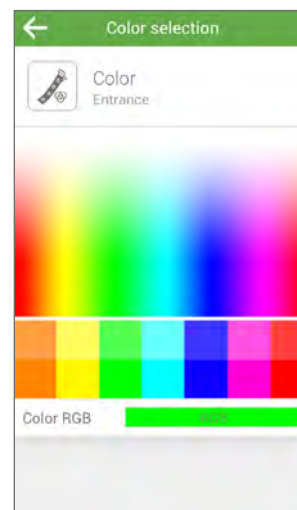
RGB colour selection (click on field to open sub-menu)

Light colour selection (click on field to open sub-menu)

Automatic colour change selection (On = "Colour change is active"); once the colour change has been activated, the speed at which it changes can also be adjusted.

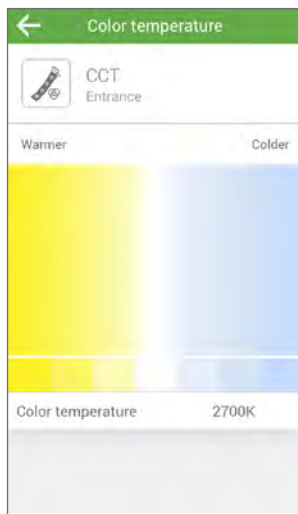
P3.3

Colour selection sub-menu.



P3.4

Light colour selection sub-menu.



P3.5

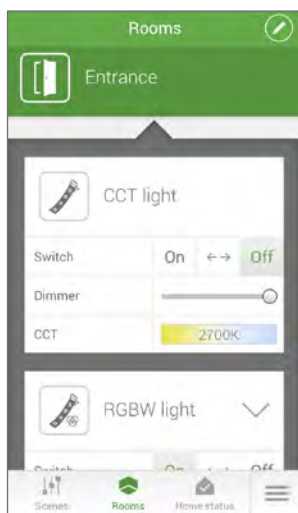
White tone adjustment on RGB devices.



Tip: On RGB devices without a separate white LED chip, you can also select a near-white tone in the top area of the colour selection menu.

P3.6

CCT Light - Tunable white/daylight control



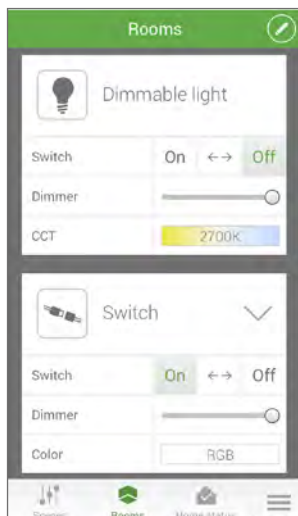
On/Off as well as <-> toggle between one setting and another.

Dimming from 0-100%

Light colour selection (click on field to open sub-menu)

P3.7

Dimmable devices



On/Off as well as <->
toggle between one
setting and another.

Dimming from 0-100%

P3.8

Switchable devices



On/Off as well as <->
toggle between one
setting and another.

P4: Further installation information about Paulmann products

P4.1

Remote control – Further information about pairing the remote control with the Smart Friends Box:

If the remote control and the gateway are to be used together to control devices, the remote control must first be paired with the gateway.

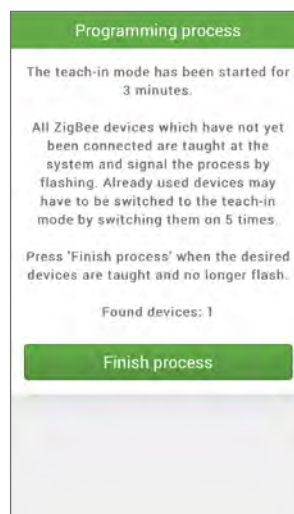
A Paulmann ZigBee remote control can be paired with the Smart Friends Box when it is in the default setting. If this is not the case (e.g. if it has already been used to control devices directly), it must first be restored to factory settings (see P4.3).



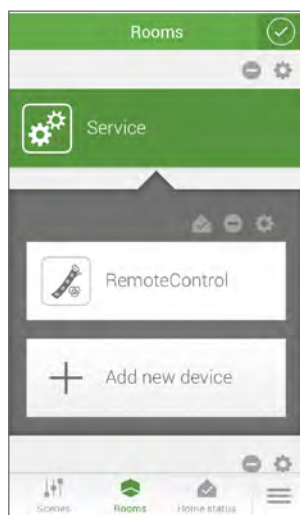
P4.2

From the **Rooms** menu, select the **Service** area to which you want to allocate the remote control (Note: without room allocation, the remote control can also be used remotely, as long as it is within range of the Smart Friends Box). Click on the **pencil symbol** to enter editing mode.

Click on + **Add new device** and then on **Add ZigBee device** (see above). The pairing process will now start.



To pair the remote control, it must be manually switched to pairing mode. To do this, press the **On/Off** button on the remote control for three seconds; the remote control will now remain in pairing mode for three minutes and can be found via the gateway. Repeated flashing of the status LED on the remote control indicates that the pairing process is currently in progress. Once the flashing stops, the remote control has been found and paired with the Smart Friends Box. Exit configuration mode in the APP by clicking on the **checkbox symbol**.



P4.3

If you would like to reset the remote control, press the following combination of buttons.

1. Press the **W button** on the remote control for three seconds.



2. Then press the **On/Off** button on the remote control for more than five seconds; the remote control has now been unpaired from the previous devices and returned to the default setting.

3. The status can be checked by pressing the + or – without pressing any other buttons beforehand: if the remote control has been reset, the status LED will **not** light up.

P4.4

Remote control – Connection to Paulmann devices

Pairing the devices to the remote control

Once the remote control has been paired with the Smart Friends Box, it can be connected directly to the devices. This offers the benefit of allowing the devices to be controlled, even when the Smart Friends Box is not active.

The Touchlink function can be used to connect directly to devices ("Binding").

Pairing via Touchlink

To pair devices to the remote control via the Touchlink function, the remote control must be held near the chosen actuator (<30 cm). Then press and hold the chosen group button on the remote control for more than three seconds. Depending on their function, lamps or luminaires signal the pairing process and its successful completion by flashing repeatedly or alternately or by lighting up green. As soon as the remote control has stopped flashing, the pairing process is complete and the remote control can be used within normal range of the device.

It is possible to allocate a device to additional group buttons. To do so, simply repeat the procedure described above with the next group button of your choice. This allows larger groups to be switched on or off and controlled simultaneously. If devices of different types are mixed in the same group, a device will ignore any group commands that it does not support (e.g. colour selection red – dimmable lamps remain unchanged).

Toggle switching or using an additional remote control

If you want to use an additional remote control for the same device, this can be "cloned". Proceed as follows:

- Remote control A: Press the **On/Off** button for three seconds; the network will be opened for 180 seconds.
- Remote control B: Also press **On/Off** for three seconds; remote control B will switch to discovery mode, connect to the open network and adopt the network address.

All functions programmed via remote control A up to this point can now be accessed using remote control B as well.

Unpairing devices from a remote control

You can unpair individual devices from the remote control via Touchlink, or reset the remote control to the default setting.

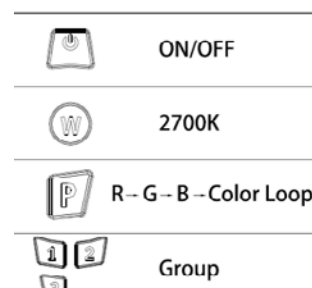
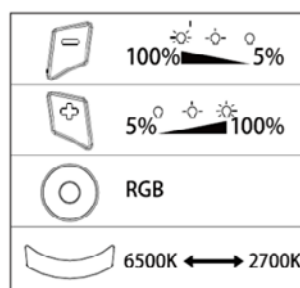
Unpairing via the Touchlink function

Press the group button of the actuator you want to unpair. Then press the **P** button for three seconds. The small status LED of the remote control will flash three times. Then hold the remote control within Touchlink range (<30 cm) of the actuator. The respective actuator will flash three times; it has now been unpaired.

P4.5

Using the remote control: The remote control can be used to switch devices on an off, as well as adjust the **brightness** (+/-), **colour selection** (colour selection wheel) and **light colour** (white tone scale and W touch field for 2700 K warm white). In addition, the **automatic colour change** can be activated by pressing the **P** button (starts from the colour blue).

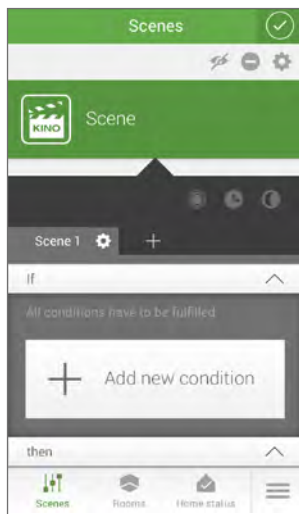
For a description of how to use the group buttons, see **Pairing via Touchlink**.



P5: Paulmann products in the "Scenarios" view

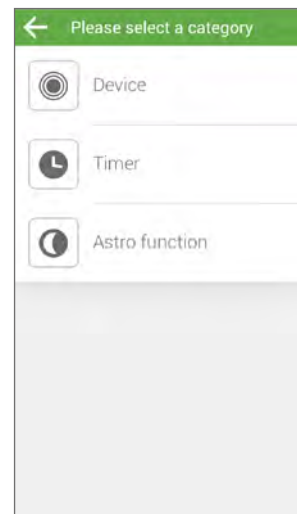
P5.1

Creating a scenario



P5.2

Device selection for **If component** possible:



Under **Device**, you can also selection a Paulmann device.

P5.3

Select the device for the **If component** based on the room allocation and chosen control position (saving necessary!)

If component: The following statuses can be used as an actuator in the "If" component of a scenario:

Switch: On/Off as well as <-> toggle



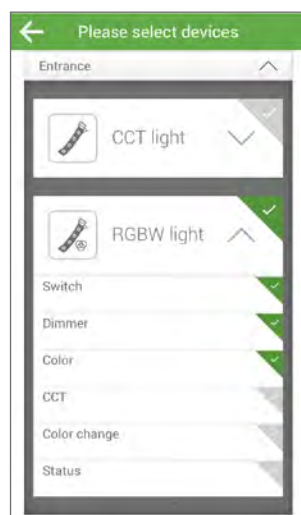
P5.4

Then component: Different functions can be selected, depending on the device type:

- **On/Off** as well as **<->** toggle between one setting and another.
- **Dimming** from 0-100%
- **RGB colour selection** (click on field to open sub-menu)
- **Light colour selection** (click on field to open sub-menu)
- **Automatic colour change selection**
(On = "Colour change is active"); once the colour change has been activated, the speed at which it changes can also be adjusted.

P5.5

Example settings for **switching, dimming and colour change (RGB)**



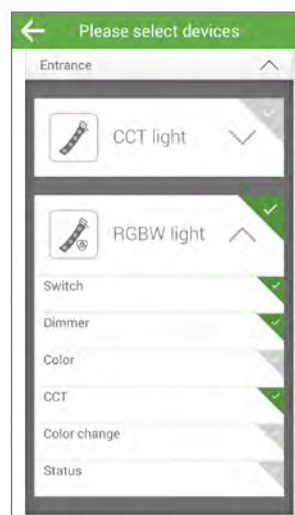
On/Off as well as **<->** toggle between one setting and another

Dimming from 0-100%

RGB colour selection (click on field to open sub-menu)

P5.6

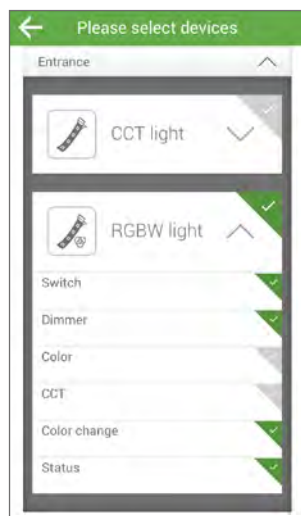
Example settings for switching, dimming and **light colour change (CCT)**



Light colour selection (click on field to open sub-menu)

P5.7

Example setting for switching and dimming with **automatic colour change** activated



Automatic colour change selection (On = "Colour change is active"); once the colour change has been activated, the speed at which it changes can also be adjusted.

To determine the chosen settings for each device and create scenarios, proceed as described in section **5.12** on **page 17**.



Note: Make sure that you do not configure **any mutually exclusive functions!** For example, a luminaire cannot be configured to colour: red and CCT: 2700 K or colour change: On at the same time – these selection criteria would cancel each other out.



Note: Always use the **Switch** option to determine your **Then component!** Otherwise, a previously switched off lamp or luminaire could be, e.g., configured to a different colour setting, but remain switched off. The effect would then only be noticeable the next time the device is switched on, e.g. via remote control.



Tip: Use the **Switch** option: **Toggle** for all cases in which you want to force a change in status independently of the current status of the lamp or luminaire.

P6: Paulmann products in the "Home status" view

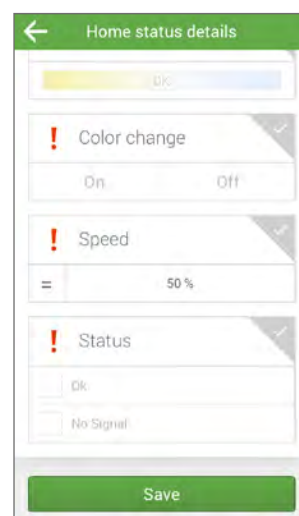
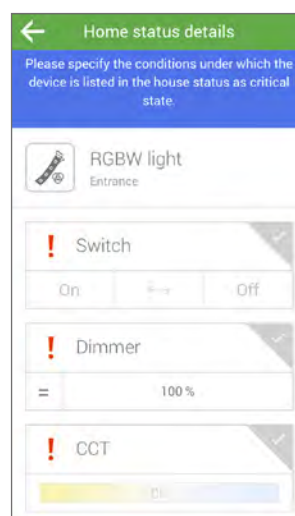
P6.1

In the Home status view, you can obtain an overview of all components whose current status has been set to critical.

Save your chosen settings!

You can freely determine the status as required:

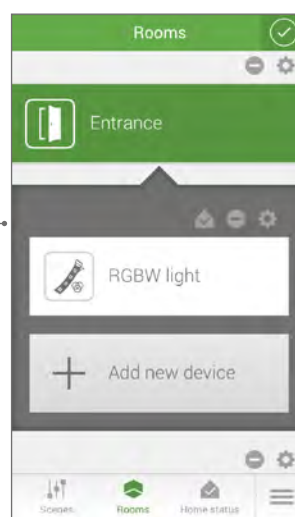
Product	Critical condition
Switches	On, Off, <-> toggle individually or in combination possible
Dimmer	Preferred dimming levels from 0-100%
CCT	Adjustment of light colour from warm to cold white using Kelvin value
Colour change	On/Off
Colour change speed	Value between 1 and 255



P6.2

You can change the device settings for the home status by switching to the Rooms view for the respective component. Select the **pencil symbol** to switch to editing mode.

Then select the **home status symbol** to switch to the settings for the respective component. Once you have configured the status of the products as critical, the **home status symbol** will appear green. If it is inactive, and no critical status has been configured on the device, the **home status symbol** will appear grey.



Exit the setting by clicking on the **checkbox symbol**.

ST1: Connecting STEINEL products to the Smart Friends Box



Important note: Complete the configuration of the STEINEL products before you connect your STEINEL products with the Smart Friends Box.

Please carefully read the STEINEL products' instructions on setting up.

Please ensure that the STEINEL products are matched to the correct network using the relevant STEINEL apps.

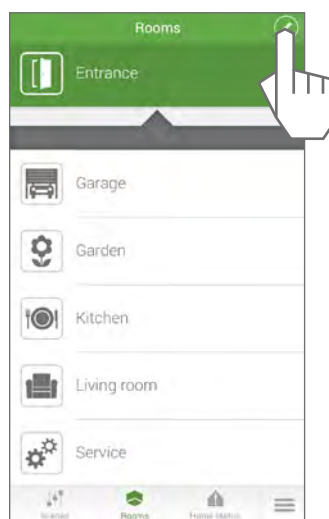


Important note: The STEINEL products' settings can be adjusted using the relevant STEINEL app.

The Smart Friends app is used for operating and connecting STEINEL products and cannot be used to adjust the configuration of STEINEL products.

ST1.1

Z Wave: Open the "Rooms" view. Select the **pen symbol** to switch to editing mode.



Important note: Please ensure that the sensor and/or the sensor light and the Smart Friends Box are in the same network and that all sensor and/or sensor beam components have been programmed.

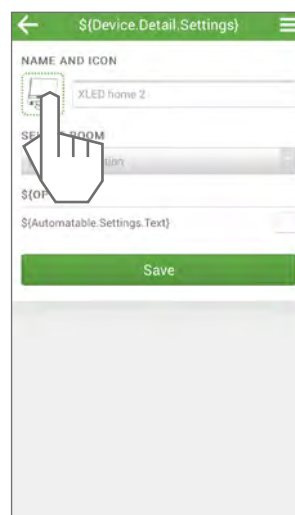
ST1.2

Select the **plus symbol** to add a new device.



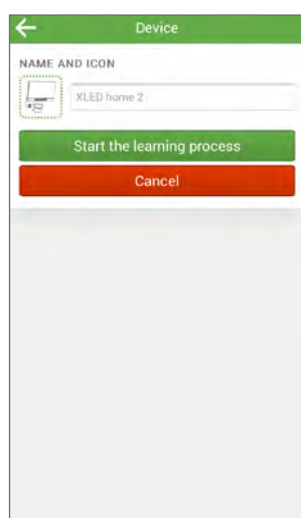
ST1.3

Select the **symbol for the device**. The three fields for the name, system and description will then be automatically filled.



ST1.4

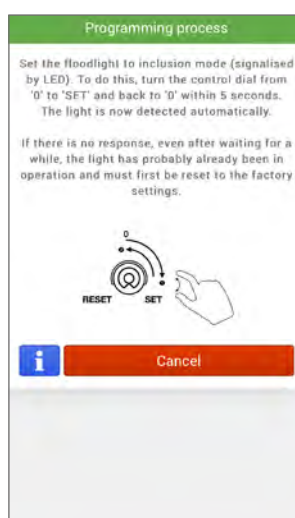
If required, you can change the name of your device.
Then, select **Synchronise Device**.



Note: If you have selected **"Synchronise Device"** you will be asked to adjust the settings on your device. Depending on the type of device you have, set it up using Z Wave as follows:

ST1.5

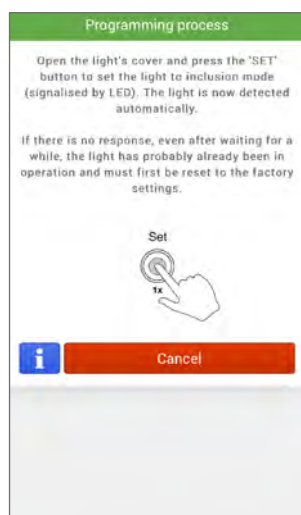
XLED Home 2 Z Wave and **IS 140-2 Z Wave** are set up using a control dial (Poti).



To do this, turn the control dial from **0** to **SET** and back again within five seconds.

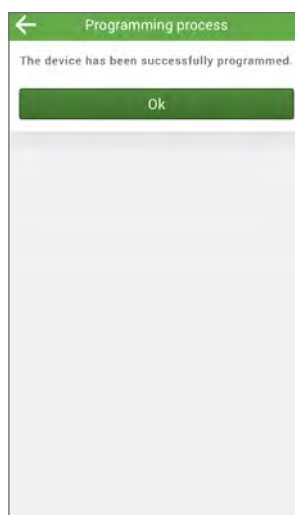
ST1.6

L810 LED iHF Z Wave and **RS LED D2 Z Wave** can be set up by simply clicking on the **SET** button.



ST1.7

You will receive confirmation when the device has been set up successfully.



ST2: STEINEL products in the "Rooms" view

ST2.1

Settings for the Z-wave components: Select the **pen symbol** to switch to editing mode.
Select the **cog symbol** to change the settings for each of the components.
In the **Rooms** view you can adjust the settings. Select the **pen symbol** to adjust the settings.



Note: Synchronisation between the STEINEL product and the Smart Friends Box is complete once all components have been matched to a room.

The Smart Friends Box will now receive information via the sensors and/or sensor lights; you can view this in your Smart Friends app. You can also switch the sensors and/or sensor lights on or off using the Smart Friends app.



On/Off: switches the sensor and/or the sensor lights ON or OFF.

Brightness: Shows the measured brightness.

Motion detectors: Shows if any current movement has been detected.

Only for the **L 810:** You can also dim the lights.

ST2.2

You make changes in the Icon, Name and Room areas.

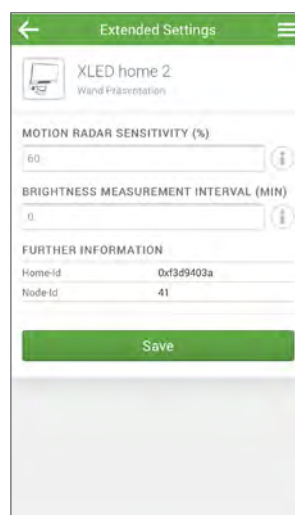


Settings:
Other settings that you can change on this device.

Links:
All scenes with this product.

ST2.3

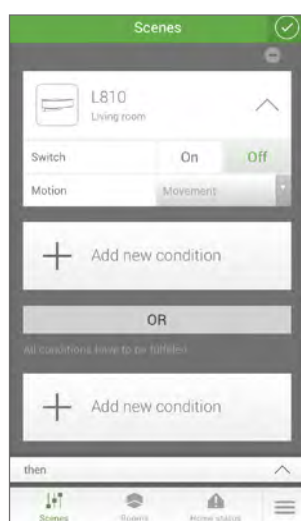
Advanced settings: Adjust the **range** and the **measurement interval**.



ST3: STEINEL products in the "Scenes" view

ST3.1

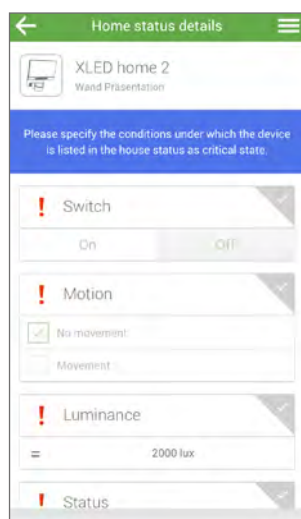
In the "Scenes" view you can switch the configured scenes ON or OFF.



ST4: STEINEL products in the "Home status" view

ST4.1

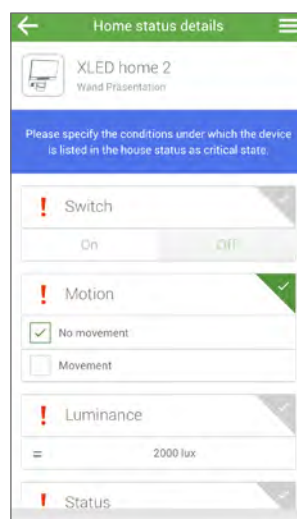
The "Home status" view provides an overview of all components whose sensor status needs to be displayed.



If the status changes, the components will no longer appear in this overview.

ST4.2

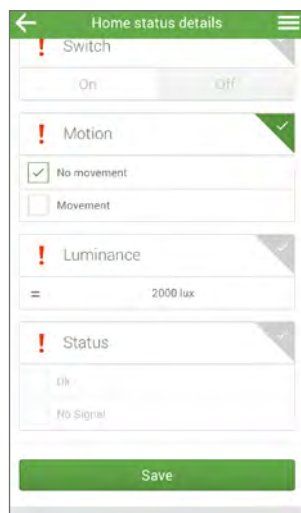
Click on a **tick symbol** if you wish to display a component under "Home status". The **tick** then turns green.



Click on a **tick symbol** if you no longer wish to display a component under "Home status". The **tick** then turns grey.

ST4.3

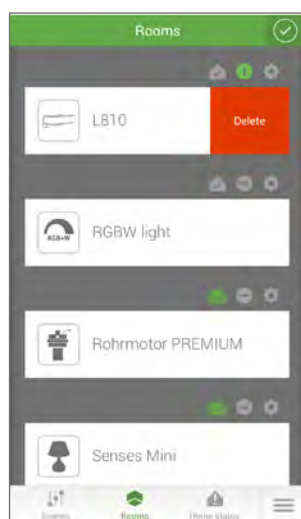
Confirm the setting by clicking **Save**.



ST5: STEINEL products in the "Removal process" view

ST5.1

Select the **minus symbol** to switch to the "Removal" process.



Tip: If you want to install a device in a different location, you need to remove it. The device can only be set up in a different location once the removal process has been completed.

ST5.2

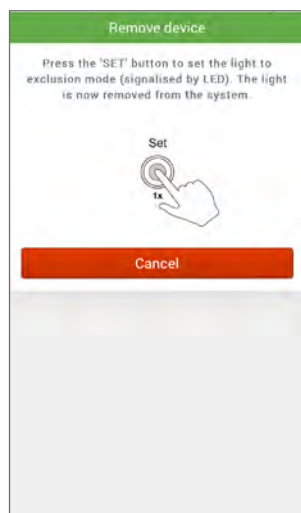
Depending on the type of device you have, there are two different ways of removing devices. **XLED Home 2 Z Wave** and **IS 140-2 Z Wave** are removed using a **control dial** (Poti).



To do this, turn the control dial from **0** to **SET** and back again within five seconds.

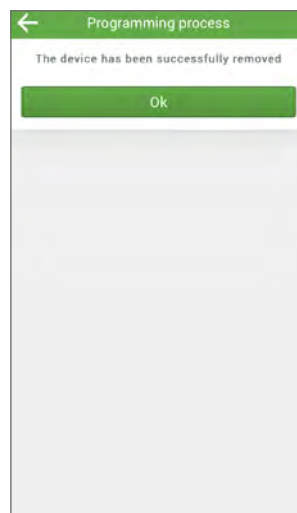
ST5.3

L810 LED iHF Z Wave and **RS LED D2 Z Wave** can be removed by simply clicking on the **SET button**.



ST5.4

You will receive confirmation when the device has been removed successfully.



The device can now be set up in a different location.



Smart Friends

Kooperation SmartHome n.e.V.
Altenhofer Weg 25
58300 Wetter / Germany
smart-friends.com

Customer Service:

T +49 (0)5041 998 0
F +49 (0)5041 998 119
info@smart-friends.de



ABUS August Bremicker Söhne KG
Altenhofer Weg 25
58300 Wetter / Germany
www.abus.com



Paulmann Licht GmbH
Quezinger Feld 2
31832 Springe / Germany
www.paulmann.com



Alfred Schellenberg GmbH
An den Weiden 31
57078 Siegen / Germany
www.schellenberg.de



STEINEL Vertrieb GmbH
Dieselstr. 80-84
33442 Herzebrock-Clarholz / Germany
www.steinell.de